

Atom, Electric Current, Gravity, Magnetism, Energy, Mass and Speed of Light are NOT what Science believes and Earth is NOT a Magnet

Ilija Lakicevic

MarslaTita 91/12, 21460 Vrbas, Serbia

Abstract: *Atom is ring of light spinning around the centering zero Mind point which is source of energy and from which light rings borrow energy in order to spin. Electricity is divider of a balanced condition into two opposite pressure conditions from zero from which both are extended which must interchange with each other in order to void their imbalanced conditions. Electricity is MOTION – any kind, or stage of motion. Gravity is measure of the Mind desire for creative expression – it is not physical force, but mental force. Gravity really means a point, or shaft, that can be located in the invisible universe, where Mind desires to concentrate thought, and thought-power. Gravity is changeless. Magnetism and gravity is one and the same thing. Energy is desire in the Light of Mind for creative expression. Matter is thought recorded electrically. Matter is compressed light. Light waves reproduce at great speed, but light does not travel at any speed. The so called bar magnet consists of two electric vortices at the bar ends interchanging with each other their polarities. The earth is formed between magnetic gaps, still points, of its wave as all bodies are formed. It is not a magnet, but an electric bar. The so called the curved lines of the earth's magnetic field are but lines and planes of electric pressures.*

Keywords: atom, gravity, energy, magnetism, mass, speed of light, electric waves, electric current, magnet

1. Introduction

It is an interesting fact that scientific concepts of atom, electric current, gravity, magnetism, energy, mass and speed of light are all opposite of the true nature concepts [1-19]. All these scientific concepts are based on sense observation or empirical knowledge. Having in mind not yet known fact in science that our senses deliver opposite of the truth [1,2, 6-19] it is no wonder that all scientific concepts are inverted from the truth. It is evolutionary step of us human beings when we become aware of the deception of our senses and go out of the electric awareness of our senses, which cannot know but can deliver information, into cosmic consciousness of our mind which knows the truth and can provide us knowledge.

We human beings are consciousness who are living simultaneously in two universes: the still, motionless, balanced magnetic universe at rest which is CAUSE and the material electric universe of motion which is EFFECT [1-19]. Because the material electric universe is made entirely of motion, the well-known electrostatic unit of charge DOES NOT EXIST – everything what is static belongs to the motionless magnetic universe. Consequently all scientific theories and concepts based on electrostatic unit of charge are incorrect.

The simplest logic tells us that negative charge cannot exist (to add by subtraction is impossible), what means that electron as negative charged particle does not exist. Also, opposite do oppose to each other – they cannot attract each other.

It is simply time to lay the information before Man – again - in different format so that the intended receivers can "discover" it and merge missing portions within their own work, thereby allowing fulfillment of great assistance to

this progressing experience of Man.

2. Literature Survey

As I have stated before [1-5], this electric universe has been constructed entirely by the electric wave, therefore, any theory of motion or matter, which is outside of electric wave mechanics and construction, is invalid.

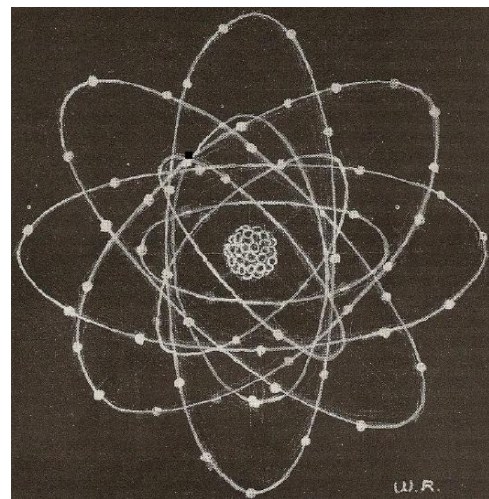


Figure 1: Rutherford-Bohr atom model

If human reasoning by the greatest of the world's thinkers built this impossible atom concept, there must be something very basically lacking in knowledge of our universe to make it possible for thinking people to form such a concept. And there is something basic, many things in fact, which sense-observation alone can never tell to man. I will enumerate these, step by step.

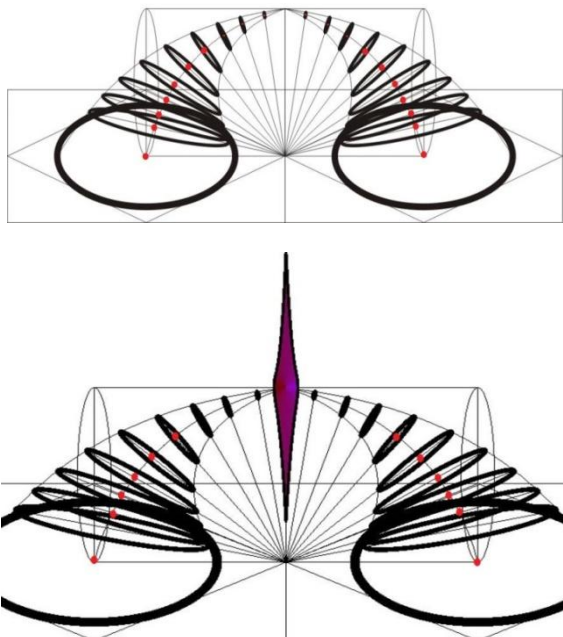


Figure 2: Rings of light with their gravity centers – red points

Nowhere in Nature does motion, in any three dimensional mass, revolve around a common center [1-19]. All mass is made up of pairs of ring units, which are joined together in parallel planes to create hemispheres. Each ring has its gravity center and each mass has its dividing equator. Adjoining rings which form spherical masses cause gravity centers of these rings to seemingly become gravity shafts. All motion, in every hemispherical mass, spins in parallel planes which are 90 degrees from the gravity shaft of that mass. This means that all motion in spherical mass spin around its gravity shaft in parallel planes and not around a common center of gravity, which supposedly controls the whole mass, but actually controls motion in the plane of the equator only. See Figure 3. This also means that Nature is bilateral and not radial.

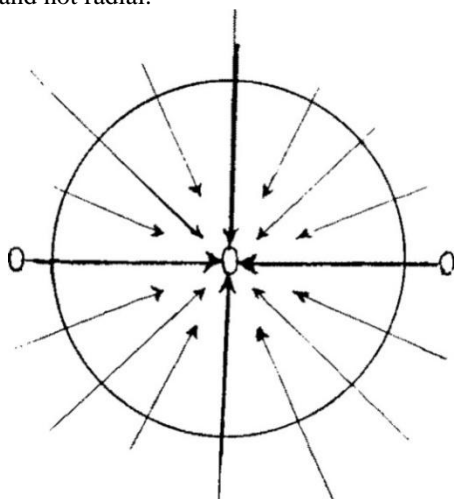


Figure 3: Illustration of the radial universe concept

All mass is divided by an equator, and the four pairs of rings which constitute that mass, are arranged in plane layers on either side of that equator. All pairs are sex conditioned by the divided spectrum, which place the red units of each pair in one hemisphere, and the blue units in the other hemisphere. The red units of mass do not revolve across a

common center of gravity and spin through the blue side to complete its orbit, as the units of the Rutherford-Bohr appear to do, as shown in Figure 1 - nor do the blue units spin through the red. That would be as much against nature as it would be for humans to change their sex during every daily cycle, say, man in the morning and female at night.

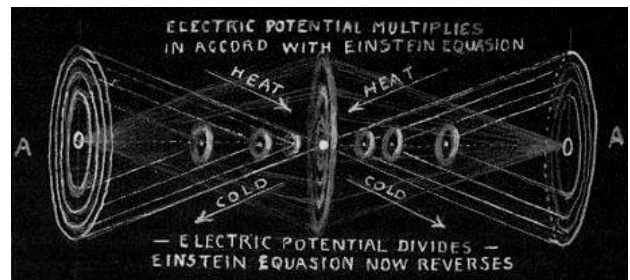


Figure 4: Illustration of the principle of creation of matter

The invisible universe is based upon the cube in relation to its control of motion. The stillness of gravity, therefore, when its points are extended to appear as a shaft, is always at an angle of ninety degrees from its electric thought-ring extensions. Never anywhere in Nature does any electric effect reach over to another center than its own. The three inner intersecting planes of the cube will not allow of such a crossing. If we examine the cleavages of a cube crystal we will not find them radiating from a center. The senses have been too much affected by the symmetry of light radiations from a star, or from the hexagonal radiating arms of a snow crystal, and many similar effects, which the senses too readily accept. It is time that we at least begin to doubt the evidences expressed and accepted of and by our senses in making hasty obvious conclusions for most frequently we will be incorrect in those conclusions.

Another cause of confusion by the senses in this respect is the fact that all planets in a system, revolve around a common center of gravity. These are rings of motion, however, which spin around holes in which their controlling center is located. Every part of the mass of every planet, however, spins around its own center which is on the gravity shaft, and always in parallel planes, not intersecting ones, which would be necessary if all parts moved around a common center.

If we look at an electric current in a vacuum tube we will see parallel rings extending from the cathode to the anode, like buttons strung upon a thread. See Figure 5. Each of these rings is controlled by its own center of gravity in its own plane. Each ring is a unit of a cycle and it is necessary for pairs of cycles to unite to form a mass, or for four pairs to unite to form spheres. When a sphere is thus formed it is as bilateral as all things else in Nature are bilateral. It extends its right arm and its left one to form a shaft. Each point of gravity in that shaft is also the fulcrum of a lever, which its ring is. The fulcrum is still, and in it is all the power which its spinning lever-ring expresses, but the energy thus expressed is not in the moving ring, it is in the fulcrum of gravity which centers it.



Figure 5: Electricity records Mind-thought in rings of light which spin around a Magnetic center of still, invisible light.

All motion in all the universe spins around Mind-centers which becomes shafts as motion extends

If we now look at the wave with this thought in our mind we will, likewise, see pairs of rings strung on the wave shaft of gravity which extends, as thought-rings of motion extend, to center and control the motion of each ring from that center, and to become a shaft of gravity for each mass which is formed by the amalgamation of ring pairs.

By a careful examination of the construction of an electric current, and an electric wave, there is no part of it in which orbits of units intersect the planes of the orbits of other units, or of masses which are formed by the union of pairs, nor do any of them share their gravity centers with other units. As there is no precedent in the electric current or wave of nature to justify the multiplane concepts shown in Figure 1, and as there is no precedent in the electric current or wave to justify the presence of material nuclei in the atomic units which constitute mass, such an impossible and unnatural concept should be expunged from human thinking.

Let us now apply this principle to the copper wire which carries a current. The wire is still. It does not move. Motion spins around its surface in rings, which are centered by holes where gravity sits and rules each ring. The wire is horizontal but motion is vertical in the plane of its spinning. The wire is a series of gravity centers which make of it a seeming shaft. The wire-shaft does not move yet it performs the tremendous work of lifting thousands of tons, and driving thousands of engines and other machines. And it could easily kill a man's body if motion, which encircled the wire, collided with the man's body.

Our senses very plainly, and truthfully, tell us that the wire is not moving, but if a speeding bullet traveled along the path occupied by the wire, our senses untruthfully tell us that the speed of the horizontally moving bullet killed the man's body, instead of the vertically spinning motion. It has been and likely will be a longer time in Man's unfolding before (s)he can differentiate between what his Mind knows and his senses believe they know, but new thinking must someday come to Man which is based upon Mind-knowing instead of body-sensing. If the Mind were allowed to function properly in actual thought projection, a speeding bullet (in fact the faster the better) striking a body would hardly be noticed - it is the Mind that is convinced of its ability to injure and kill and the body reacts as directed - if struck appropriately, it dies.



Figure 6: The supreme proof: MirinDajo

Let us now bend the copper wire into a semi-circle to

symbolize a wave, and send a current through it. We have now curved our gravity shaft and our planes of motion, which spin around it at angles of ninety degrees, and are no longer parallel. They all point in the direction of the center of a circle and our senses tell us that that center is the common center of gravity for all of those converging radial lines. That is another misleading illusion which our senses believe in implicitly, but is not true to Nature. We must give space enough to very briefly tell what the Mind knows in respect to the curvature of gravity, which the senses cannot sense.

To help imagine this let us first disturb the horizontal plane of calm water and bend it into a semi-circular wave, as we bent the wire. The electric compression pressure registered fifteen pounds per square inch before the water was disturbed. It now registers less above the surface and more in the trough of the next wave. The gravity shaft curves as electric pressures curve. Our senses tell us that the wave shaft is moving up and down. Also senses tell us that they are moving right and left. We speak of the speed in which light waves travel, which is proof that we believe that they do travel, when they but move up and down. For demonstration watch this video https://www.youtube.com/watch?v=OI_HFnNTfyU&t=6s from 10.11 – 11.10. Light waves reproduce at great speed, but light does not travel at any speed.

These are the things our senses tell us but our Mind knows that the only direction of motion is the electric direction of circles, which spin around gravity shafts to cause EFFECTS which our senses thoroughly believe in but which are NOT FACTUAL. Light does not travel. It only appears to, and that appearance is limited to the boundaries of its own electric wave-field. We do not yet know the universal radar principle which repeats every happening anywhere to everywhere. Our senses are mightily confused between zero cause and dual effect.

The greatest, and most visibly evident proof of the fact that the universe of suns and earths is made up of pairs of rings, and that they disintegrate by throwing off pairs of rings, is to look at the greatly magnified pictures of such planets as Jupiter and Saturn, and such ring nebulae as Lyra and the others. The great telescopes very clearly show the parallel wrinkles on Jupiter, which make its surface look like heavy corduroy.

The fact that all such planets and suns oblate proves that the rings expand in their own planes and not radically. If a planet expanded radially it would still be a sphere, no matter how large it grew, but all through the heavens we can see planets and suns expanding in planes which are parallel to their equators. This they continue to do until great holes are bored right through them where their gravity shafts exist to still control them until their motion ceases entirely. The Dumbbell Nebula is an excellent example of a sun thus expanded until a very large hole has bored right through it as it slowly explodes. In all probability part of it will regenerate a new sun in its center as the Lyra Ring Nebula and countless others have done.

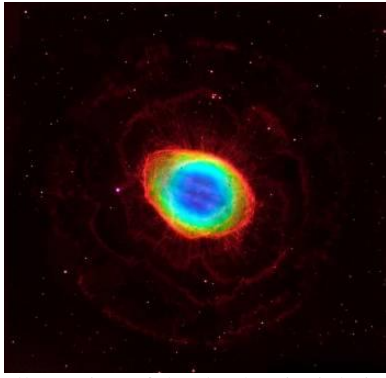


Figure 7: Illustration of the death principle in all matter. Spheres are created by compressing rings to form in them. Spheres are then disintegrated by projecting rings from them until a black hole surrounds their axis of rotation and they gradually expand until they eventually disappear into their cathodes.

3. Approach and Results

It now remains to explain why gravity does not express itself in radial lines from the surface to the center of a sun or planet, as diagrammed in Figure 3. With all that knowledge we will better comprehend why nature will not tolerate such intersecting orbital planes of motion as the theory of the nuclear atom demands, as shown in Figure 1.

There are only two spots upon the surface of a true spherical sun where a stone, dropped upon it, will continue its electric journey to its very center. Those two spots are the two "magnetic poles" which are the ends of the gravity shaft upon which the whole mass turns. Likewise, there is but one plane, where a stone, dropped anywhere upon it around the entire sun, would continue its electric journey to the sun's center. That plane is the equator which divides the two hemispheres.

Do not lose sight of the fact that suns are made up of pairs of rings which parallel their equators and also do not lose sight of the fact that each ring is an effect which is centered by its own controlling cause. Likewise, bear in Mind that gravity is omnipresent and does not move.

With these warnings we are now ready to drop a stone on the earth a thousand miles from the equator. We will ignore, for the purposes of this demonstration, that the earth is not now a true sphere as it once was, and, for that reason, the gravity poles do not coincide with the pole of rotation (and that should scare us badly enough in its own right). The stone now curves toward the pole as it is dropped, and its direction toward its centering gravity shaft still continues to curve away from the earth's gravity center, instead of directly toward it as our senses have long told us it would do. See Figure 8. This oblate earth actually has two gravity centers, but we will ignore that also.

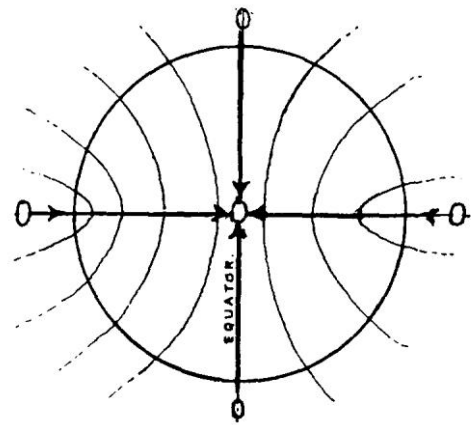


Figure 8: Illustration of the bilateral nature of matter and the seeming curvature of gravity

We drop another stone another thousand miles farther north, and still another with the same result. Each ring plane owes its allegiance to its own center of gravity in its own plane, but as there are countless billions of rings within rings between the surface and the gravity shaft, the line of gravity control will forever curve, until the last stone cast will be nearer the north pole than the earth's center, toward which it was originally headed, and where our sense told us it would go. Figure 8 illustrates this fact of the curvature of electric potential pressures, which gives the impression that gravity itself is curving.

We are probably familiar with the bar magnet experiments with iron filings which curve from pole to pole. These curved lines are known as magnetic lines of force. We may also be familiar with the curved lines from the earth's equator to its poles, which the text books call the earth's magnetic field. These curved lines ARE IN NO WAY RELATED TO MAGNETISM. They are but lines and planes of electric pressures.

Figure 8 will graphically diagram this effect but Figures 9 through 20 and especially 9 and 10 will help to clarify them still further, and comparing one with another. When we have done this we will no longer accept the possibility of such an effect in nature as the nuclear atom such as shown in Figure 1. Also we will more clearly comprehend the marvels of the advance in electronics, which is making such marvelous strides against the resistance of sense-believing in things which the Mind knows to be otherwise.

3.1 The principle of electric current

All actions in Nature are extension-retractions from zero to zero, and back again to zero. All are balanced simultaneously and sequentially. This is a zero universe of plus and minus zero which never exceeds the zero of the One Light from which it seemingly sprang as multiplicity.

This zero universe of equilibrium demands two opposed conditions in order to simulate that which your senses interpret for motion and change. These two needed conditions are plus and minus equilibrium; positive and negative electricity (Figure 9).



Figure 9: X plus zero equals zero minus X (X – borrowed pressure)

Plus zero means a credit of pressure borrowed from the universal equilibrium to compress a large volume into a small volume. Minus zero means an equal expansion to balance the borrowed compression.

As example, a thousand dollars borrowed from a friend (without interest) is a plus condition of credit which is balanced by an equal debit of one thousand dollars. The central zero represents the friend. The extended zeros represent credit and debit. Both are equal but opposite. A credit of one thousand dollars equals zero. When the credit is paid in part or in full the debit is proportionately voided simultaneously with the credit.

These two opposite conditions of credit and debit correspond with the two opposite conditions of compression and expansion in Nature upon which Motion is dependent. When an equilibrium condition is divided into two opposite conditions from the zero from which both are extended, motion between the two becomes imperative. They must interchange with each other to void their unbalanced conditions. This is the principle of the electric current.

Let us now "assume" a room of equal pressure (Figure 10). Two tanks in it are connected with a tube and petcock. By pumping all the air out of one tank into the other, the two plus-minus conditions have been established which make motion imperative. Nature always borrows each opposite from the other in this manner.

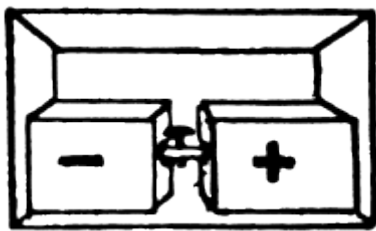


Figure 10: Basis of Motion

By opening the petcock an outward explosion will take place in the plus tank. An inward explosion of equal potential will take place in the evacuated tank. The plus tank will discharge part of its compressed condition to charge the minus one. The electric battery is the same in principle (Figure 11).

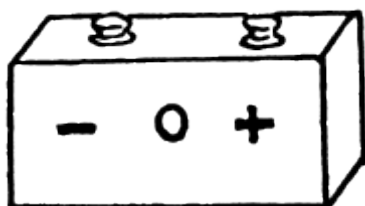


Figure 11: Equal Opposite Potentials

In Nature the discharged radiation which explodes outward from the sun simultaneously explodes inward as gravitation.

3.2 Universal Pulse Beat

Actually, it is the "cause" of the universal pulse beat of which I speak. Matter and space constitute the two conditions necessary for interchange of motion diagrammed in Figures 10 and 11 with one very distinguishing difference. That difference is that the two conditions represented by the tanks of the compressed and expanded air and the two cells of the electric battery are equal in volume, while bodies of matter and their surrounding space are unequal in volume.

The expanded condition of space is millions of times greater in volume than the compressed condition of its centering body. This explains the seeming mystery of gravitation and radiation which causes solid objects to fall toward the earth and gases to rise toward space.

In the electric battery the interchange between the two pressure conditions can void both in an explosive flash by a short circuit if the wire connecting both cells is **heavy** enough. If a small wire connects both cells the interchange takes time to complete the voidance. Each condition gives to the other in installments, for the wire is not big enough to void both conditions instantly. The consequent giving and regiving by the two opposite pressures constitute the oscillations of the electric current. Electric interchange by installments is measured and recorded by waves, and the time element of those recordings of interchange are wave frequencies. They constitute the pulse beat of the electric current. When an electric wire pulses with wave frequencies of an electric current we say that it is a *live wire*. When it stops pulsing because the current is disconnected we say that the *wire is dead*, for it no longer pulses.

All Nature pulses in measured frequencies with the heartbeat of the universal electric current, as evidenced by universal breathing inward toward bodies and outward toward space. When breathing is switched off in a man's body by the cessation of interchange between the two opposite pressure conditions of matter, we say that the man is dead. By solving the mystery of "installment interchange" between bodies and space one can more fully comprehend the fact that neither pulse beat, breathings nor wave frequencies of interchange have any relation whatsoever to life, for they relate only to the principle by means of which life or energy is manifested by motion.

The first step in solving this mystery lies in the principle by means of which matter and space become unequal in volume.

The time is at hand wherein Man must have the correct answer, lest all Men will perish from the planet. If we work moment by moment living and KNOWING God and awareness of His presence all can be accomplished. With such a power extended to Man from the universal Source,(s) he can become master of every art (s) he desires with which to express self.

As can be proven by ones who had opportunity to experience with Walter Russell, we are experiencing an identical sequence herein - where Truth and Insight are being brought forth from the Source THROUGH Man. Ones who have failed to find their messages in other works - MUST be given opportunity to see, hear and respond to purpose. This means that the expression must be given forth in many places, yet there is only ONE Truth. Walter Russell was a most important person in experience upon your place but unfortunately, as with Tesla, Newton, etc., there is great need to discount his work and worse, make every effort to erase his presence from view.

Walter was also unaware of this Cosmic Consciousness until a great event in the year of 1921 when a great flash of light severed his consciousness from the seat of sensation of his body. For almost forty days and nights he was wholly MIND, being aware of his body, and making use of it, but as though it was quite apart from him. This is a magnificent experience for any who comes into, within and through this type of awakening and KNOWING.

3.3 The secret of the equator

Figure 12 represents the electric battery with the line AB dividing the two pressure conditions as the equilibrium of both. This line represents a magnetic (static) equator - a plane of rest from which both opposite conditions are extended at right angles as an electric (dynamic) equator - line CD.

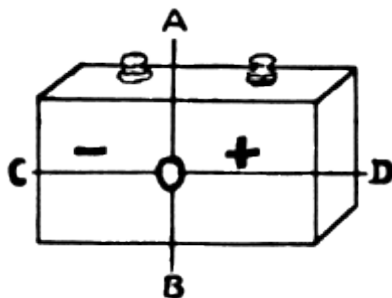


Figure 12: Balanced interchange between equal conditions

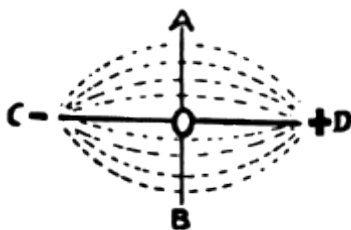


Figure 13: Symmetry of the cube: AB-Magnetic (Static) equator, CD - Electric (Dynamic) equator

Figure 13 represents magnetic and electric equators (or magnetic and electric) at ninety degrees from each other. As the two opposed conditions which extend from these planes of rest are equal, the lines of force which connect both are as symmetrical to both diameters as though reflected by mirrors placed at right angles to each other. Such symmetry belongs to the cube and sphere alone.

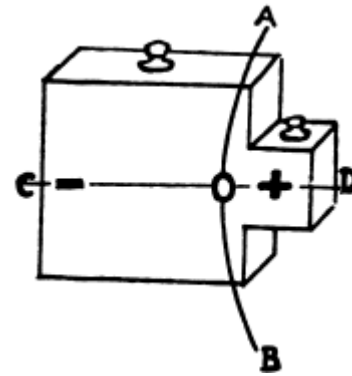


Figure 14: Interchange between unequal opposites

Figure 14 represents the electric battery with the negative cell much larger than the positive cell. The magnetic and electric equators will still be at right angles to each other but the magnetic equator will not be in the middle. It will be much nearer the positive pole and will be curved because lines of force which record the measure of interchange between the two opposite pressures can be symmetrical to the electric equator only, and not to the magnetic equator.

Such symmetry belongs to the radial universe of cone sections. All electric equators are radial, and all lines of force of conic symmetry are forever changing to record the forever changing potential of dynamic equators.

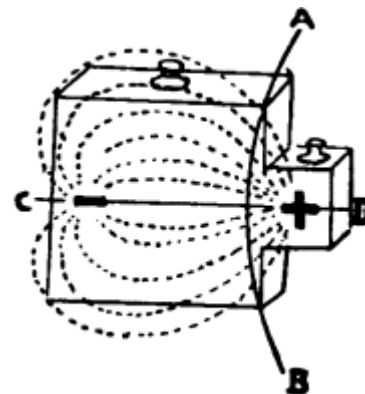


Figure 15: Curvature increases

Figure 15 illustrates this principle which forms spheres and creates the illusion which makes heavy objects seem to be attracted radially toward the earth and tenuous matter thrust radially away from it. Line AB shows the curvature of the magnetic equator which causes the electric equator to expand at its negative end and contract at its positive end into the radii of a cone. The outward thrust of radiative pressures would curve the base of the cone thus produced to correspond with the curvature of its magnetic equator, AB.

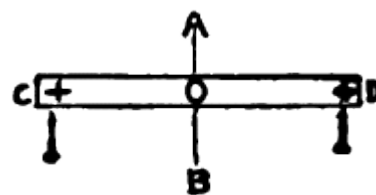


Figure 16: Equal interchange

Figure 16 represents a bar magnet which has been divided into the two opposite pressure conditions of this electric universe **by coiling a charged wire around the bar of steel**, thus forming two opposed plus and minus electric vortices with intensities measured at poles.

Two nails of equal weight are suspended to these poles. It is not magnetism, however, which picks up these nails. It is **the electric vortices which pick them up**, for the vortices are still effective upon that steel bar even though the electrically charged wire has been removed.

It is the whirlpool motion of the electric vortex which performs the work of lifting those nails and not the stillness of the poles of magnetic Light.

If the bar magnet is enlarged at one end it becomes a cone. The division into the two opposed conditions will still be equal, as in Figure 9, but the volume will be so large in one as compared with the other that the nail which the positive end will still pick up cannot be lifted by the negative end unless the nail is ground to a fine powder. The negative end will then lift the same weight in total but only by dividing nail over the whole volume.

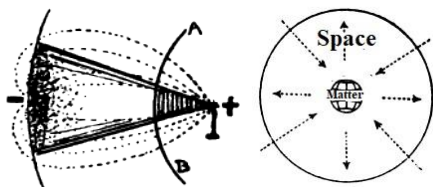


Figure 17: Interchange between unequal volumes

3.4 Earth is not a magnet

Before this principle is applied to matter and space, it is necessary to correct the **general** impression that the earth is a magnet. By referring to the **bar magnet** pictured in Figure 16 it can be seen that its poles alone express gravity at still points! The earth, on the contrary, expresses gravity at its center. See Figure 11.

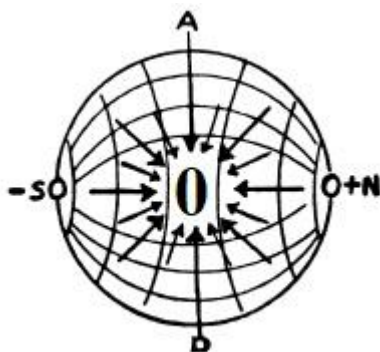


Figure 18: Earth expresses gravity at its center

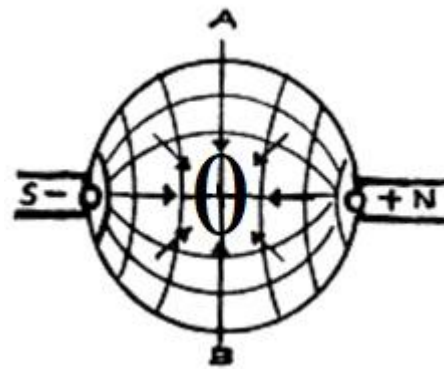


Figure 19: Matter is formed between magnetic poles inwaves

The earth is formed between magnetic gaps, still points, of its wave as all bodies are formed (Figure 19). If two bar magnets are placed so that negative and positive ends are near each other, that still point which we call the center of gravity will evidence itself between the two ends. If iron filings are placed in this, gap conditions of gravity similar to those of the earth will be found there. Gravity will end and radiation will begin at that center. Nails will fall toward it from any direction, as heavy objects do on earth, and compass needles will follow the vortical directions of lines of force which extend toward its poles.

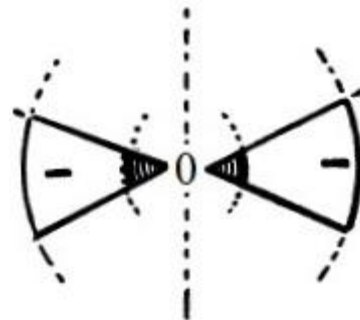


Figure 20: Curvature increases as potentials divide and multiply

The analogy between the unequal battery cells and bar magnets is now sufficiently complete to compare them with matter and space. In Figure 20 two bar magnets have been fanned out into cones. The weight which the positive end will pick up as a solid has to be finely divided in order for the expanded volume of the negative end to pick it up. The essential difference between the two opposed pressure conditions of the electric battery and the two of matter and space is that in the battery the opposed potentials are equal because the **volumes are equal**.

In the universal battery of matter and space the two opposed conditions are conspicuously unequal. The resultant high and low potential contrast each other so violently that solid matter "falling" toward the high potential of the compressed condition must be divided into vapors and gases before the same substance will "fall" toward the low potential of the expanded condition (water is nice example). A solid bar of iron will fall radially toward the earth because both are high potential compressed solids. If divided sufficiently by vaporizing it, that same bar of iron will fall radially toward the heavens.

Gravity and radiativity are opposite pressure conditions of the same thing. Both of those pressure conditions are in every creating thing. Every creating thing can expand to lower its potential, or can contract to raise it. ***Like conditions seek like conditions to find balance.*** Creating things changing their compressed conditions to expanded conditions must move ***to find balance in like conditions.*** That is the sole cause of two-way motion.

Every potential has a balancing potential position somewhere in the universe. Desire to find that position is in every creating thing and any restraint exerted to prevent it from moving to find its balancing potential can be measured as weight. The cause of the radial universe which constitutes matter and space lies in the **inequality of the two opposite pressure conditions both as to volume and potential.**

The cause of the universal pulse beat and the breathing which motivates the manifestation of life in every creating thing lies also in this inequality. All creating things pulse and breathe just as organic "life" pulses and breathes, but that is not life, it is but motion.

The one most important thing to burn into our consciousness is to realize that wherever motion is, it is centered by stillness, and that stillness is its CAUSE. The universe is composed of electric thought-rings of motion. Each thought-ring is centered and controlled by the Creator of that thought-ring. God creates His universe in that way. ***We create our universes that way, also.*** It is God who sits there. It is the Magnetic Light of all-knowing, all-powerful Mind which sits there. We call that centering point GRAVITY. The reason why we call it gravity is because there are adjacent thought-rings which have united together so closely that we think of them as mass, instead of rings. Each added ring of the mass has its Mind-center in its own plane. In a mass, therefore, there are seemingly so many Mind-centers of stillness that they constitute a shaft. The word "gravity" arises from this fact. ***Gravity is a shaft of Mind-controlling stillness. In that sense, gravity and God are one. Every point of that gravity point is the same point, for God's zero universe is omnipresent.***

God centers all units of His Creation. It is God's energy which created His universe. God is the Source of energy which causes all motion. God's Mind is OUR Mind. He extends the energy of His Mind to every atom which moves around His center of stillness where He takes His omnipresent stand in every thought-ring and cell. Whatever knowledge we ever acquire comes to us from our Mind within. Our senses cannot acquire knowledge. They can but be informed of effects of motion. And they can be mightily deceived by what they see. Knowledge can come only through Mind. Mind-awareness in the human race has but begun. With Mind-awareness comes God-Consciousness.

God-Consciousness and cosmic awareness of the Light of the Divine Presence within every Man is the next step in the spiritual nature of Man. Thousands-and then more thousands-are beginning to comprehend that Inner Voice of one's own Mind coming from within each Man. The reason for that is because the human race is still in its intellectual infancy. The Dawn of Mind-Consciousness is too recent for

all Men to THINK with their Mind. Man-in-the mass still SENSES with his body. His desires are still dominated by his senses. His concepts are still sense-based. He hurts himself with his own acts and calls them evil. He conceives a personal God with vengeful human emotions. Evil was conceived in the senses of Man. It has no existence in the Light of Mind

4. Conclusions

All Nature, everywhere, cries out its protest to such an unnatural and impossible condition as the nuclear atom. Nature is cellular and cells are rings in sections. Also, every cell in Nature is a product of the union of four pairs of rings. Nature also cries out its protest against such a concept as that of a cosmic "glue" of some mysterious and mystical nature, which supposedly holds the atom together from within a nucleus. ***Atoms are held together only by pressure from the outside and sealed from the outside by cold.*** The inside every atomic mass is a heat generator and heat consumer. Atomic units have cold centers, but combined atomic masses have relatively hot centers, according to their purpose and position. Its cells must be electrically conditioned to maintain that heat, but no matter what the temperature is in any cell it tends to ***expand*** it-not hold it together. Instead of being a glue, it is an explosive.

The center of any mass like the sun is a center of maximum heat and pressure which is a violently explosive condition, not an attractive one, for heat expands and violently desires to escape.

Every effect in Nature which observers have attributed to gravity and magnetism should rightly be attributed to electric potential.

It is impossible for the senses to penetrate any effect to ascertain its cause for the cause of illusion is not within effect. For this reason the entire mass of so-called empirical knowledge which science has gained by reasoning through the senses is invalid.

What observers think of as magnetic power is the measure of electric potential which is created around gravity shafts and centers. The multiplication of electric potential around gravity shafts is - in reality - the manner in which Mind-thinking concentrates.

It is not gravity, or Mind, or stillness, which multiplies, however. That which multiplies and divides is electric potential only, and that means fast or slow centripetal or centrifugal motion. The gravity which evidences Mind-concentrative power is changeless. Motion surrounding it alone changes.

Creation is an electric effect of compression. Compression multiplies to accumulate mass. Expansion divides to dissolve mass. Compression is an effort which causes tensions in a vacuous condition. Expansion is that vacuous condition. Motion is always seeking a level. The level EXISTS. Motion simulates existence. It requires effort to divide a level into two levels, but the two become one

without effort. Compression is always TWO but expansion is ONE, which the TWO eternally seek.

Desire in the Light of Mind for creative expression is the only energy in this universe. All motion is Mind motivated. All motion records Mind thoughts in matter.

The earth is formed between magnetic gaps, still points, of its wave as all bodies are formed. It is not a magnet, but an electric bar. The so called the curved lines of the earth's magnetic field are but lines and planes of electric pressures. They Are In No Way Related To Magnetism..

References

- [1] IlijaLakicevic, ""Aton" True Cell, Atom and Particle Concept", *International Journal of Science and Research (IJSR)*, https://ijsr.net/archive/v8i10/show_abstract.php?id=ART20201755, Volume 8 Issue 10, October 2019, 388 - 395
- [2] IlijaLakicevic, "The True Concepts, Laws and Equations of Creation", *International Journal of Science and Research (IJSR)*, https://www.ijsr.net/archive/v8i10/show_abstract.php?id=ART20202091, Volume 8 Issue 10, October 2019, 1170 - 1193
- [3] IlijaLakicevic, "The Right Therapy for Radiation Poisoning", *International Journal of Science and Research (IJSR)*, https://www.ijsr.net/search_index_results_paperid.php?id=SR20309224250, Volume 9 Issue 3, March 2020, 568 - 575
- [4] 4. IlijaLakicevic, "The True Value of the PI Number and Squaring the Circle", *International Journal of Science and Research (IJSR)*, https://www.ijsr.net/search_index_results_paperid.php?id=SR20409190322, Volume 9 Issue 4, April 2020, 624 - 633
- [5] IlijaLakicevic, "Birth of the Planetary Being", *International Journal of Science and Research (IJSR)*, https://www.ijsr.net/search_index_results_paperid.php?id=SR20422181950, Volume 9 Issue 4, April 2020, 1148 - 1164
- [6] Russell Walter: "The Universal One" Edited by Louise Russell, UNIVERSITY OF SCIENCE AND PHILOSOPHY Swannanoa, Waynesboro, Virginia
- [7] Russell Walter: "The Secret of Light", Third Edition, University of Science And Philosophy, Formerly The Walter Russell Foundation Swannanoa, Waynesboro, Virginia, 22980
- [8] Russell Walter and Lao: "Atomic Suicide?" Copyright 1957, 3rd Edition: 304 Pages, ISBN: 978-1-879605-11-4
- [9] GYEORGOS CERESHATONN "dharma", Phoenix Journal: "Matter Anti-Matter & What's The Matter" ISBN 0-922356-41-6, First Edition Printed by America West Publishers, 1991, Published by America West Publishers, P.O. BOX 986, Tehachapi, CA. 93581
- [10] GYEORGOS CERESHATONN "dharma", PHOENIX JOURNAL: "GODSAID: LET THERE BE LIGHT AND CREATION BECAME", PLEIADES CONNECTION, VOL. II, ISBN 0-922356-42-4, First Edition Printed by America West Publishers, 1991, Published by AMERICA WEST PUBLISHERS, P.O. BOX 986, Tehachapi, CA. 93581
- [11] VIOLINIO GERMAIN & GYEORGOS CERES HATONN "dharma", PHOENIX JOURNAL: "I AND MY FATHER ARE ONE SECRETS OF UNIVERSAL ORDER: ETERNAL QUEST OF MAN", PLEIADES CONNECTION VOL. III, ISBN 0-922356-46-7, First Edition Printed by America West Publishers, 1991, Published by AMERICA WEST PUBLISHERS, P.O. BOX 986, Tehachapi, CA. 93581
- [12] VIOLINIO GERMAIN & GYEORGOS CERES HATONN/ATON "dharma", PHOENIX JOURNAL: "MURDER BY ATOMIC SUICIDE Technical And Spiritual Disclosure Of The Secrets Of How, Why, What, Where, When And Who Of The Universe And Its Functional Projections", PLEIADES CONNECTION VOL. IV, ISBN 0-922356-47-5, First Edition Printed by America West Publishers, 1991, Published by AMERICA WEST PUBLISHERS, P.O. BOX 986, Tehachapi, CA. 93581
- [13] VIOLINIO GERMAIN & GYEORGOS CERES HATONN/ATON "dharma", PHOENIX JOURNAL: "PHONE HOME ET. REACH OUT AND TOUCH SOMEONE-LIKE GOD!", PLEIADES CONNECTION VOL. V, ISBN 0-922356-48-3, First Edition Printed by America West Publishers, 1991, Published by AMERICA WEST PUBLISHERS, P.O. BOX 986, Tehachapi, CA. 93581
- [14] VIOLINIO GERMAIN & GYEORGOS CERES HATONN/ATON "dharma", PHOENIX JOURNAL: "The Sacred Spirit Within Mitakuyeoyasin (for all my relations--which is ALL)", Pleiades Connection VOL. VI, ISBN 0-922356-50-5, First Edition Printed by America West Publishers, 1991, Published by America West Publishers, P.O. BOX 986, Tehachapi, CA. 93581
- [15] Violinio Germain & Gyeorgos Ceres Hatonn/Aton "dharma", Phoenix Journal: "Human The Science if Man The Scientific Definition and Proof of God and The Cosmic Order Of The Universe What is Creation And How It Came To Be", Pleiades Connection Vol. VII, ISBN 0-922356-51-3, First Edition Printed by America West Publishers, 1991, Published by America West Publishers, P.O. BOX 986, Tehachapi, CA. 93581
- [16] Violinio Germain & Gyeorgos Ceres Hatonn/Aton "dharma", Phoenix Journal: "Science of the Cosmos Transformation Of Man", Pleiades Connection VOL. VIII, ISBN 0-922356-52-1, First Edition Printed by America West Publishers, 1991, Published by AMERICA WEST PUBLISHERS, P.O. BOX 986, Tehachapi, CA. 93581
- [17] Gyeorgos Ceres Hatonn, Phoenix Journal: "Mysteries Of Radiance Unfolded", Relative Connections VOL. II, ISBN 1-56935-019-1, First Edition Printed by Phoenix Source Publishers, Inc. P.O. Box 27353, Las Vegas, Nevada 89126, August 1993
- [18] Violinio Germain & Gyeorgos Ceres Hatonn/Aton "dharma", Phoenix Journal: "Science Of The Cosmos Transformation Of Man", Pleiades Connection Vol. VIII, ISBN 0-922356-52-1, First Edition Printed by America West Publishers, 1991, Published by AMERICA WEST PUBLISHERS, P.O. BOX 986, Tehachapi, CA. 93581
- [19] Gyeorgos Ceres Hatonn, Phoenix Journal: "Mysteries

Of Radiance Unfolded”, Relative Connections Vol.II, ISBN 1-56935-019-1, First Edition Printed by PHOENIX SOURCE PUBLISHERS, Inc. P.O. Box 27353, Las Vegas, Nevada 89126, August 1993

Author Profile



I was born on August 6, 1950 in Grab, Montenegro (former Yugoslavia). 1982 – Acquired my PhD in the field of atomic and plasma physics, at the same Faculty, under the title: “Regularities and Systematic trends of Stark Width and Shift Parameters of Spectral Lines in Plasmas”. 1985 -1987 Spent two years as fellow of the Alexander von Humboldt Foundation from Bonn (Germany) at the University Düsseldorf developing plasma UV-spectroscopy at the tokamak UNITOR and performing measurements of the plasma instabilities in the scrape-off layer at the tokamak TEXTOR in Jülich (Germany).

1987 – 1991 Worked as the guest scientist at the Max-Planck-Institute for Plasma Physics in Garching by Munich (Germany) performing measurements of the magnetic field configuration at the stellarator W7AS as well as the measurements of the limiter heat load.

1991 – 2000 Was working in the Institute of Physics in Zemun (Serbia) on investigations of the plasma force-free configurations and in 1995 I acquired the Research Professor degree.

2000 – At the end of 2000 I chose to leave the Institute of Physics and went on my own way to discover self and to discover and learn the God’s principles and laws of creation.

After 18 years of the progression toward that sacred goal, I finally succeeded and now I know many of the God’s creational principles and laws (unknown until now) and can apply them for the simple and efficient creations which make the basis for a new life quality on this planet.

I am a pioneering with the New Conscious Energy and building a new civilization without electricity.

I’ve developed the QUANTUM RADIATION BALANCER – the genuine product in form of a self-adhesive sticker certified by the Hado Life Institute of Dr. Masaru Emoto which 100% balances radiation from any device, if attached to it, protecting the human body and environment from its harmful effects and eliminating with time the damages already caused by the radiation. It can be successfully applied to: cell phones, computers, laptops, microwave ovens, cordless phones, tablets, wireless monitors, Wi-Fi routers, TV-sets, Radios, and any other source of radiation.

Thanks to the consistent pursuit of my Leitmotif “The Authority of Truth rather than the Truth of Authority” I have experimentally proved the true atom, cell and particle “ATON” concept. According to the “ATON” concept, atoms, cells and particles are made of light which are spinning around the centering Mind (Spirit) points (the black holes). Nature expresses energy as electric potential in only one way, which is the same way both for the atomic and for the stellar scale: by projecting mentally the rings of visible light which are spinning around the centering Spirit points. This amazing beauty of creational simplicity is the basic fundamental truth of the new science that is based on the knowledge of the cause.

I wrote two books: “GOD IN THE ATOM” and DODECA 101 LOVE ENERGY which are available on my website: <http://www.teslastyle101.com>