

In-Vitro Assessment of Anticancer Potential of Lapatinab and Bee Venom against Breast (MCF-7) and Prostate (PC-3) Cancer Cell Lines: *In-Vitro* Study

N. Karem¹, A. Fahmy²

¹Faculty of Biotechnology, October University for Modern Sciences and Arts, Cairo, Egypt

²Holding Company for the Production of Vaccines, Sera and Drugs (VACSERA)

Abstract: Breast cancer is the second leading cause of cancer death in women, on the other hand prostate cancer is the third leading cause of death in men worldwide. They are considered to be the most aggressive cancers due to failure in response to chemotherapy. Thus, there is an urgent need of finding alternative therapies for breast and prostate cancer. In present study, the anti-cancer properties and cytotoxicity of Lapatinab and bee venom on breast MCF-7 and prostate PC-3 cancer cell lines were evaluated using MTT assay and it was noticed that the cytotoxicity was concentration dependent recording IC_{50} of 60 μ g and 81 μ g and 288 μ M and 345 μ M for MCF-7 and PC-3 respectively. Furthermore, synergetic activity of both bee venom and Lapatinab to the other recording a significant decreased IC_{50} values in the order of 1.04 μ g and 0.59 μ g for BV and 178 μ M and 234 μ M for Lapatinab post MCF-7 and PC-3 respectively. The cell cycle arrest profile and specific cellular apoptosis markers were monitored (MMP1, CDK2, HER2, and P53) in bee venom and Lapatinab IC_{50} values pretreated MCF-7 and PC-3 cells using real time PCR and flow cytometric analysis. By analyzing the cell cycle arrest and related gene expression pattern, it was noticed that the main phase of cell cycle arrest was found to be G0/G1 in MCF-7 cell line. And S-phase arrest was observed in bee venom pretreated breast MCF-7 cell line to a greater extent than that observed in cells only treated with Lapatinab. Up regulation of pro-apoptotic and down regulation of anti-apoptotic genes in bee venom pretreated cells were significantly enhanced as compared to cells treated with Lapatinab. In this study, we suggest that Lapatinab via its synergistic action with bee venom might be used as an enhancer of the anticancer properties of Lapatinab.

MMP1, CDK7, HER2, P53.

Keywords: Bee venom, Lapatinab, MCF-7 and PC-3 cell lines, Cell cycle, cytotoxicity, anticancer activity

1. Introduction

Breast is the most common cancer among women while prostate is the most common among men. The American Cancer society estimated that for breast cancer 255,180 new breast cancer cases and 41,070 breast cancer deaths were expected to occur in the United States in 2017 (Siegel *et al.*, 2016). Furthermore, according to the National Cancer Institute in 2016, approximately 12 percent of men will be diagnosed with prostate cancer (Pollán., 2010). Moreover, several studies have reported that breast cancer in young women have more aggressive features, such as larger tumor size, poor differentiation, positive lymph nodes, high proliferation rates, higher prevalence of Human Epidermal Growth Factor Receptor 2 (HER2/neu) over expression, and much more tumors of the basal-like histologic subtype (Walker *et al.*, 1996). On the other hand, Many studies conducted that men with prostate cancer may experience common problems such as BPH (benign prostatic hyperplasia), acute and chronic bacterial prostatitis and chronic prostatitis (Rycaj and Tang., 2015).

However, the most common types of cancer treatment include Chemotherapy, surgery, and radiation- therapy. There are two types of chemotherapy: The first type is cell cycle specific which affects cells only when they are dividing, on the other hand the second type is cell cycle non-

specific which affects cells when they are at rest. According to Puliyeel *et al.*, (2015), chemotherapy drugs mainly work through damaging the DNA or the RNA of the cells. However, these types of cancer treatment contain many side effects that have a psychological, physical, emotionally, and economic impact on the patient's life. Cancer patients typically experience "Break-Through" nausea, vomiting, hair loss, weight loss or gain, feeling constantly tired, mouth ulcers, chemo brain (problems with concentration or memory), hearing loss, fertility issues, and heart and lung problems as a result of the active pharmacology imposed by Intravenous Chemotherapy (Siegel *et al.*, 2012).

Nonetheless, bee venom (BV) (api-toxin) is known to be one of the strongest natural substrates that are very useful in cancer treatments. Correspondingly, it has been widely used in the treatment of some immune-related diseases, as well as in recent times in treatment of tumors. Several cancer cells, including renal, lung, liver, prostate, bladder, and mammary cancer cells as well as leukemia cells, can be targets of bee venom peptides such as melittin and phospholipase A2. The cell cytotoxic effects through the activation of PLA2 by melittin have been suggested to be the critical mechanism for the anti-cancer activity of BV.

The induction of apoptotic cell death through several cancer cell death mechanisms, including the activation of caspase and matrix metalloproteinases, is important for the melittin-

induced anti-cancer effects. The conjugation of cell lytic peptide (melittin) with hormone receptors and gene therapy carrying melittin can be useful as a novel targeted therapy for some types of cancer, such as prostate and breast cancer. This review summarizes the current knowledge regarding potential of bee venom and its compounds such as melittin to induce cytotoxic, antitumor, immunomodulatory, and apoptotic effects in different tumor cells in vivo or in vitro (Oršolić, 2011).

Furthermore, Lapatinab (INN) is used in the form of Lapatinab ditosylate (USAN) is an orally active drug for breast cancer and other solid tumors. It is a dual tyrosine kinase inhibitor which interrupts the HER2/neu (human epidermal growth factor receptor 2) and EGFR (epidermal growth factor receptor) pathways (Medina and Goodin, 2008). It is used in combination therapy for HER2-positive breast cancer. It is given with chemotherapy tablet called capecitabine, or in combination with hormonal therapy. It is used for the treatment of patients with advanced or metastatic breast cancer whose tumors overexpress HER2. Over expression of HER2/neu can be responsible for certain types of high-risk breast cancer induction in women. Like Sorafenib, Lapatinab is a protein kinase inhibitor shown to decrease tumor-causing breast cancer stem cells by binding to the ATP-binding pocket of the EGFR/HER2 protein kinase domain, preventing self-phosphorylation and subsequent activation of the signal mechanism. It was recorded that bee venom, melittin and propolis showed clear anticancer potentials as they up/down regulate of *P53*, *BAX* pro-apoptotic genes and *Bcl2* anti-apoptotic gene, respectively (Aydiner, 2016).

However, these side effects of chemotherapy resulting from the drug effects itself in addition to the drug administration in large amounts lead the scientists to think about a solutions in order to reduce these adverse effects. One of these solutions is the emerging or combining Lapatinab that aimed to overcome the problems stated above by using natural compounds such as bee venom, which may affect multiple targets with reduced side effects and which are effective against several cancer types such as breast cancer. However, natural compounds from various sources including plants, animals, and microorganisms offer a great opportunity for discovery of novel therapeutic candidates for the treatment of breast cancer. Accordingly, the aim of the present work is to *In-vitro* evaluate the anticancer potential of Lapatinab as anticancer drug against breast (MCF-7) and Prostate (PC-3) cancer cell lines, in addition to the evaluation of the enhancement potential of bee venom to the anticancer property of test drug and related gene profile.

2. Materials and Methods

Breast Cancer of Human (MCF-7) cell line, Prostate Cancer of Human (PC-3) cell line, Bee venom, and Lapatinab were kindly supplied from cell culture unit and Helwan Animal House (VACSERA-Egypt), respectively.

Preparation of bee venom and Lapatinab

Bee venom was dissolved in RPMI 1640 medium as 2 mg / ml, and sterile filtrated using syringe filter (Millipore –

USA). Although, Lapatinab was dissolved in (DMSO) and prepared as 10 mM/ ml

Cytotoxicity (MTT assay)

Human Breast (MCF-7) and prostate (PC-3) cancer cells were propagated in 75 cm² cell culture flasks using RPMI-1640 medium (GIBCO-USA) supplemented with 10% (v/v) fetal bovine serum (GIBCO-USA) and incubated in 5% (v/v) CO₂ incubator at a temperature of 37°C. Confluent cells were detached using 0.25% (w/v) trypsin solution and 0.05% (v/v) ethylenediaminetetraacetic acid (GIBCO-USA) for 5 min. Cells were plated at a concentration of 2 x 10⁵ cells/ml in 96-well cell culture plates and incubated at a temperature of 37°C for 24 hours to achieve confluence state. The medium was decanted and fresh medium containing various concentrations of bee venom and Lapatinab was added for cytotoxicity determination using colorimetric MTT reduction assay. Dead cells were washed out using phosphate-buffer saline (PBS), and 50 µl of MTT stock solution (0.5 mg/ml) were added to each well. After 4 h incubation period, the supernatants were discarded and the formazan precipitates were solubilized by addition of 50 µl per well of dimethyl sulfoxide (DMSO). Plates were incubated in the dark for 30 min at a temperature of 37°C, and absorbance was determined at a wavelength of 570 nm using microplate reader (ELX -800, Biotek- USA). The cell viability percentage was calculated using the following formula:

$$\text{Cell viability (\%)} = \frac{\text{OD of treated wells} \times 100}{\text{OD of control wells}}$$

The synergetic potentials of bee venom and Lapatinab was examined by evaluating the cytotoxic potential of bee venom and Lapatinab in MCF-7 and PC-3 cells pretreated with the safe concentration of each of them for 24 h. Morphological alterations of cells were analyzed using an inverted microscope (Nikon-Japan). The cell viability (%) was blotted against the tested bee venom and Lapatinab concentrations.

Statistical analysis

Statistical significance between treated and untreated cells was determined using one way ANOVA. Differences at P values less than 0.05 were considered significant. The IC₅₀ values of test bee venom and Lapatinab were determined using Masterplex-2010 software program.

Cell cycle analysis

MCF-7 and PC-3 cells pre-cultured in 25 cm² cell culture flasks were treated with an IC₅₀ of test venom dissolved in RPMI-1640 medium, for 24h. For cell cycle analyses, the cells were harvested and fixed gently with 70% (v/v) ethanol in PBS, maintained at a temperature of 4°C overnight and then re-suspended in PBS containing 40 µg/ml PI and 0.1 mg/ml RNase and 0.1% (v/v) Triton X-100 in a dark room. After 30 min at 37°C, the cells were analyzed using a flow-cytometer (Becton-Dickinson, San Jose, CA, USA) equipped with an argon ion laser at a wavelength of 488 nm. The cell cycle and sub-G1 group were determined and analyzed, as described previously.

mRNA Expression levels of cell apoptosis-related genes

Total RNA was extracted from control and treated MCF-7 and PC-3 cells using the GeneJET RNA Purification kit (Fermantus-UK) according to the manufacturer's protocol. The concentration and the integrity of RNA were assessed spectrophotometrically at 260/280 nm ratio and by gel electrophoresis, respectively. First-strand cDNA was synthesized with 1 μ g of total RNA using a Quantitect Reverse Transcription kit (Qiagen, Germany) in accordance with the manufacturer's instructions. These samples were subsequently frozen at a temperature of -80°C until use for determination of the expression levels of MMP1, CDK7, HER2, and P53 genes using real-time PCR. Quantitative real-time PCR was performed on a Rotor-Gene Q cyler (Qiagen, Germany) using QuantiTect SYBR Green PCR kits (Qiagen, Germany) and forward and reverse primers for each gene. The nucleic acid sequences of the primers were as follows :human MMP-1 (F 5'-ctggccacaactgccaaatg-3', R 5'-ctgtccctgaacagcccagctactta-3') & CDK7 CDK2 (Cyclin-dependent kinase 2) (F 5'-GCTAGCAGACTTTGGACTAGCCAG -3', R 5'-AGCTCGGTACCACAGGGTCA -3') & P53 (F 5'-CCCCTCCTGGCCCCTGTCATCTTC -3', R 5'-GCAGCGCCTCACAACCTCCGTCAT-3'). as well as anti-apoptotic gene HER2 (F 5'-ATCTGCCTGACATCCACG-3', R 5'-GCAATCTGCATACACCAGTTC-3') compared to β -actin as a housekeeping gene (F 5'-TTCCTGGGCATGGAGTC-3', R 5'-CAGGTCTTTGCGGATGTC-3'). Real-time PCR mixture consisted of 12.5 μ L 2x SYBR Green PCR Master Mix, 1 μ L of each primer (10 pmol/ μ L), 2 μ L cDNA, and 8.5 μ L Rnase-free water in a total volume of 25 μ L. Amplification conditions and cycle counts were a temperature of 95° C for 15 min for the initial activation, followed by 40 cycles of denaturation at 94° C for 15 s, annealing at 60° C for 30 s, and elongation at 72° C for 30 s. Melting curves were performed after real-time PCR to demonstrate the specific amplification of single products of interest. A standard curve assay was performed to determine the amplification efficiency of the primers used. Relative fold changes in the expression of target genes (MMP1, CDK7, HER2, and P53) were accomplished using the comparative 2^{- $\Delta\Delta$ Ct} method [22] with the β -actin gene as an internal control to normalize the level of target gene expression. $\Delta\Delta$ CT is the difference between the mean Δ CT (treatment group) and mean Δ CT (control group), where Δ CT is the difference between the mean CT gene of interest and the mean CT internal control gene in each sample. Logarithmic transformation was performed on fold change values before being statistically analyzed, using the fold change values of three replicates for each gene measured.

Statistical analysis

All experiments were carried out in three independent tests. Data were expressed as the mean \pm standard deviation (SD) and analyzed using one-way analysis of variance (ANOVA). The results were considered statistically significant at probability < 0.05.

3. Results

Cytotoxicity

The cytotoxic effect of test bee venom was assessed by recording the various morphological changes of cells. Induced cell toxicity was accompanied with morphological changes in the culture fields showing a polygonal shape with distinct boundaries and homogenous cellular contents. On the other hand, a number of morphological abnormalities of cells were observed 24 h post treatment with the bee venom. At the lowest concentrations, cells lost their characteristic appearance, became rounded and detached out of the culture surface, while other cells retained their normal morphological appearance.

Increasing bee venom concentrations resulted in increased cellular irregularities and larger areas devoid of cells. At the highest concentrations, cells showed obvious deterioration and deformation with severe shrinkage and condensation of their cellular contents. The viability % of treated cells was concentration-dependent and the IC₅₀ values of Bee venom was 60 and 81 μ g/ml and 288 μ M and 345 μ M for mMCF7 and PC-3 post treatment with bee venom and Lapatinab respectively and the MCF-7 and PC-3 cells pretreatment with Lapatinab maximized the cytotoxic effect of bee venom significantly(P<0.05) recording 1.04 and 0.59 μ g for MCF7 and PC-3 and the IC₅₀ of Lapatinab was decreased significantly post cell pre-treatment with BV safe concentration recording 178 μ M and 243 μ M for MCF-7 and PC-3 respectively. [Fig. 1-2]

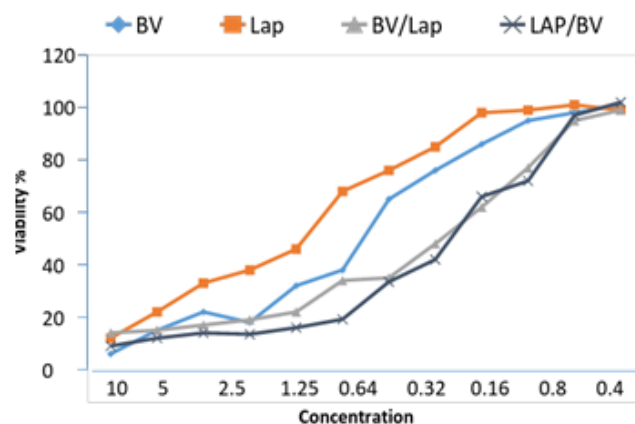


Figure 1: Evaluation of cell viability relative to Concentration.

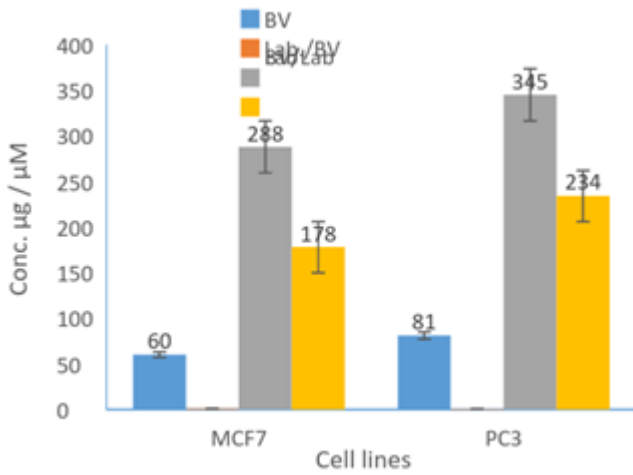


Figure 2: Evaluation of IC50 of sole bee venom and Lapatinab and their synergetic activity

Cell cycle analysis

Toxicity of bee venom and Lapatinab was accompanied by cell cycle arrest in both MCF-7 and PC-3 cell lines. Cell cycle analyses have demonstrated that there was an accumulation of arrested cells in the G2/M phase in both cell lines either after cellular treatment with bee venom alone or in the case of Lapatinab pretreated cells. In addition, S phase arrest was found to be significantly higher in MCF-7 cells with 24.51% and 17.04% in the case of bee venom and Lapatinab pretreated cells as compared to untreated cells (24.37 %). PC-3 cells exhibited an increase in the percentage of apoptotic cells as indicated by G0-G1 phase recording 56.66% and 57.66%, in addition to elevated G0-G1 phase

that was observed in MCF-7 cells in the order of 55.33% and 53.56 post bee venom treatment and Lapatinab pretreatment, respectively, compared to control cells [Fig.4&5].

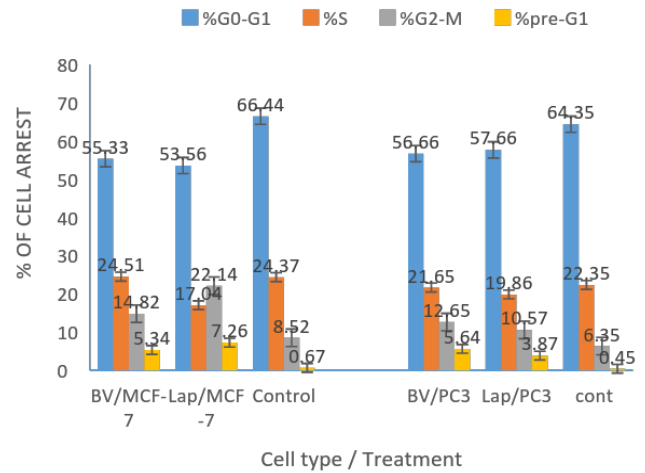
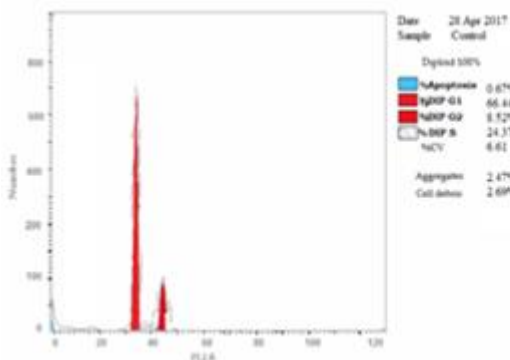
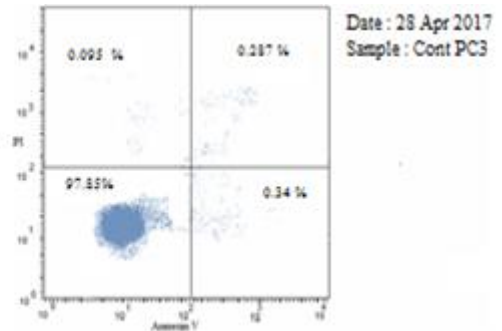


Figure 3: The arrest % at each of the cell cycle phases of MCF-7 and PC-3 cell lines after treatment with bee venom and Lapatinab in comparison to control.

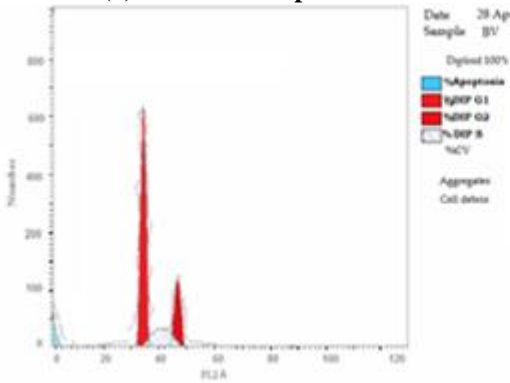
Figure 4 Cell cycle analysis of MCF-7 (B 1,2) and (C 1,2) cell line after treatment with Lapatinab and bee venom in comparison to control A (1,2) samples, detected by flow cytometry.



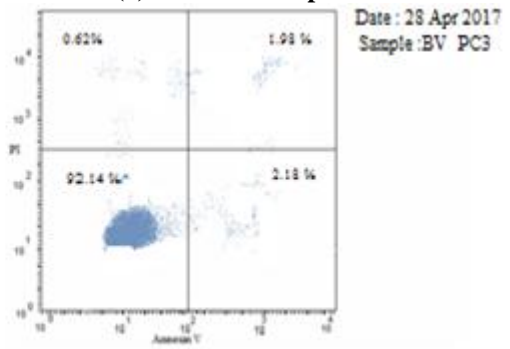
A (1): Control Sample MCF-7



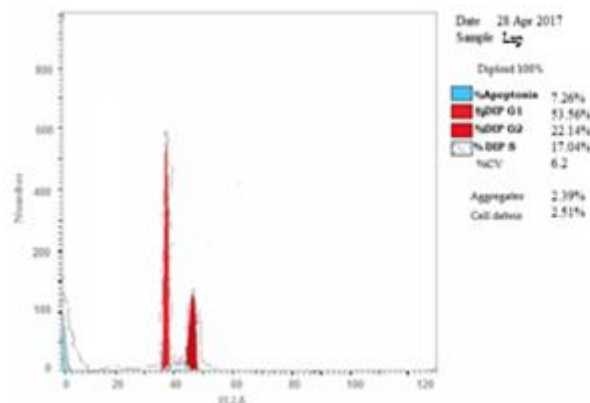
A (2): Control Sample MCF-7



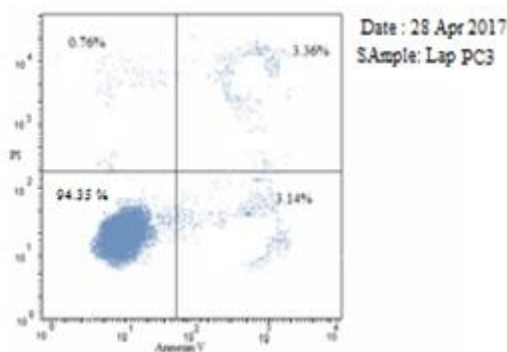
A (1): Control Sample PC-3



A (2): Control Sample PC-3



C (1): PC-3 with Lapatinab



C (3): PC-3 with Lapatinab

Figure 4: Cell cycle analysis of PC-3 (B 1,2) and (C 1,2) cell line after treatment with Lapatinab and bee venom in comparison to control A (1,2) samples, detected by flow cytometry.

mRNA expression levels of apoptosis-related genes.

Data reported that pretreatment of MCF-7 and PC-3 cancer cells with Lapatinab potentiates the apoptotic activity of bee venom. The level of expression of pro-apoptotic genes (MMP1, HER2, CDK2, and P53) was clearly up-regulated, while the expression level of anti-apoptotic genes was down-regulated ($P < 0.05$) indicating its potential efficacy in directing cancer cells towards programmed death [Fig.5-6].

Gene expression RT-PCR

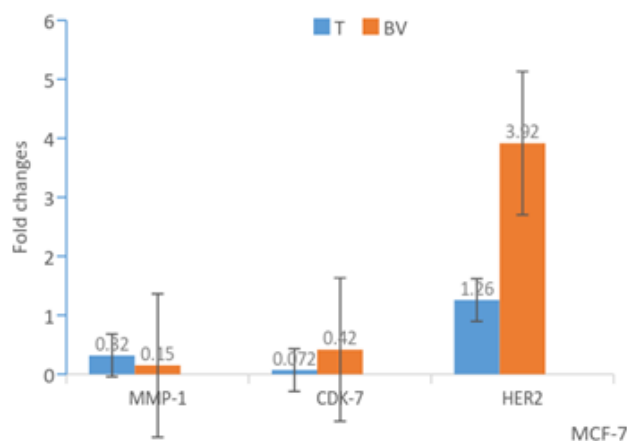


Figure 5: Gene expression level of MMP1, CDK2, and HER2 in Breast (MCF-7) cancer cells after the treatment with bee venom and Lapatinab, using real time PCR.

GENE EXPRESSION RT-PCR

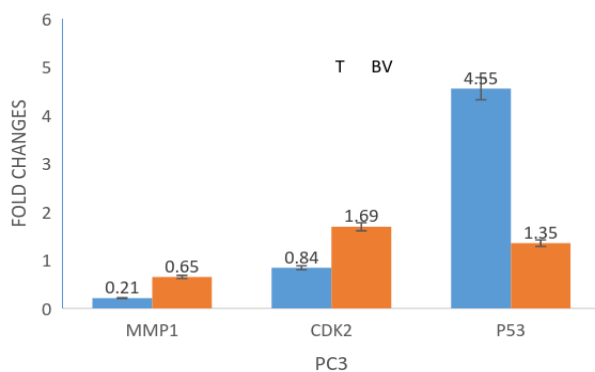


Figure 6: Gene expression level of MMP1, CDK2, and P53 in Prostate (PC-3) cancer cells after the treatment with bee venom and Lapatinab, using real time PCR.

4. Discussion

Combined chemotherapy is known to be one of the most effective treatments for numerous types of cancer, especially when it is combined with a natural compounds that are believed to have multiple specific targets with minimal acceptable side-effects. Moreover, it decreases the likelihood of resistant cancer cells to develop. In the same way combination of anticancer drug with proteinacious products or fractions enhance the anticancer activity as conducted by (Ayman *et al.*, 2017) recording that pre-treatment of PC-3 cells with BCG / DDP derived protein enhanced the toxicity and anticancer potential of cerastes cerastes venom of about 150 fold and in turn proapoptotic genes.

In addition, the cell cycle profiles obtained during this research stating that bee venom has an anti-proliferative and cytotoxic effect on prostate cancer cells are found to be similar to the published work of Park *et al.*, (2010) in which bee venom was tested on several human prostate cancer cell lines including LNCaP, DU145, and PC-3. The results obtained suggested that bee venom inhibited the tumor growth and the activity of NF- κ B accompanied with apoptotic cell death. Therefore, bee venom mediated the induction of apoptotic cell death as well as increased the expression levels of P53 (pro-apoptotic) and decreased levels of MMP-1 and CDK7 (anti-apoptotic).

Although, another study conducted by Jo *et al.*, (2012) and Burke *et al.*, (2001) bee venom was tested for anti-cancer effects and its ability to inhibit the cell growth through the enhancement of death receptor that expressed in the human ovarian cancer cells, SKOV3, and PA-1 post treatment with (1–5 μ g/ml) of bee venom, the expression of death receptor DR3 and DR6 was increased in both cancer cells, nonetheless the expression of DR4 was increased in PA-1 cells only. Furthermore the expression of DR downstream pro-apoptotic proteins that include caspase-3, 8, and Bax was concurrently increased, however, it inhibited the expression of Bcl-2 in SKOV3 and PA-1 cells and the phosphorylation of JAK2 and STAT3. The expression of cleaved caspase-3 has been increased in SKOV3, on the other hand the expression of cleaved caspase-8 has been increased in PA-1 cells. Furthermore, deletion of DR3, DR4,

and DR6 with small interfering RNA has significantly reversed bee venom induced cell growth inhibitory effect in addition to down regulation of STAT3 by bee venom in SKOV3 and PA-1 ovarian and breast cancer cells. However, the results showed that bee venom induced apoptotic cell death in ovarian and breast cancer cells through the enhancement of DR3, DR4, and DR6 expression as well as through the inhibition of STAT3 pathway. These results illustrates the importance of bee venom in the induction of apoptotic pathways in breast cancer, and thus making it the perfect candidate for our study.

Moreover, in the present study the cell viability evaluation exhibited that the combination of Lapatinab with bee venom (natural compound) overcomes the drug resistance and inhibits migration of HER2 positive breast cancer cells by interrupting signaling from the epidermal growth factor receptors, EGFR and HER2/neu. Conversely, at the same time it's capable of increasing the probability of Lapatinab-resistant cell selection. These results obey with the work done by **Kaczyńska et al., (2016)** which aims to confirm whether the combinations of Lapatinab with isothiocyanates (natural compound) would apply stronger cytotoxic effect than therapy targeting the receptor only. Upon the investigation of the combination of Lapatinab with any of isothiocyanates significantly decreased cell viability and inhibited migration of populations consisting of different amounts of drug-sensitive and drug-resistant cells. In case of population entirely composed of Lapatinab-resistant cells the most effective was combination of Lapatinab with natural compound which decreased cell viability and motility, phosphorylation of Akt, S6 and VEGF level more efficiently than each agent alone. In the present study the combination of the bee venom with Lapatinab increased the cytotoxic effect on the cancer cells, where the cell viability test showed significant decrease as the dose concentrations increases.

Furthermore, According to a study conducted by **Drigla et al., (2016)** to evaluate the synergistic effect induced by propolis and bee venom on luminal (MCF-7) and TNBC (Hs578T) cell lines. Two breast cancer cell lines: MCF-7(luminal subtype) and Hs578T (TNBC subtype) were treated in a combination. The results indicated that both cell lines exhibited similar sensitivity to the aqueous extract of propolis at a dilution of 0.072–0.09 mg/ml. Furthermore, it concerning IC₅₀ for bee venom on MCF-7 cells was 1 mg/ml, 20 times higher than 0.05 mg/ml in Hs578T cells. By combining the aqueous extract of propolis with bee venom, the synergistic effects were obtained at a higher concentration, which was 5 and 2 times stronger than the two treatments alone. These results can hypothesize that the combination of honeybee propolis and bee venom might be involved in signaling pathways that could overcome cells resistance to therapy. However, these results are matched with the present study despite the use of different cell lines that considered different gene pattern and different combinations.

In the studies conducted by **Drigla et al., (2016)** and **Kaczyńska et al., (2016)**, showed an agreement to our results that suggest that the effect of both bee venom and Lapatinab is concentration, cell type and time dependent.

And that both bee venom and Lapatinab have almost the same effects *in vitro*. Furthermore, they showed an elevation in the expression of the pro-apoptotic genes P53 while a down regulation in the anti-apoptotic gene MMP-1 and CDK-7 was noticed in PC-3 cell line. On the other hand, they showed up regulation of MMP-1 and down regulation of CDK-7 and HER2 in MCF-7 cell line as well as a noteworthy cell cycle arrest at G2/M was observed post treatment with bee venom and Lapatinab in both cell lines.

5. Conclusion

Novel therapeutic strategies for cancer are one of the most important current concerns. Natural compound mixtures that are believed to have multiple specific targets with minimal side-effects are now of interest to many researchers. Therefore, the present work could conclude that Both bee venom and Lapatinab are cytotoxic in a concentration and cell type dependent , evaluation of cytotoxicity post pretreatment of MCF-7 cells with bee venom and Lapatinab separately enhanced the cytotoxicity of both than the single use of treatment in a significant way. Furthermore, the use of both bee venom and Lapatinab showed a common cell arrest during the G2-M phase and the little arrest was clear in the S phase in case of cell treatment with Bee venom. In the same time, there was a clear up and down regulation of target genes those responsible for the suppression of cancer metastases and growth namely P53, HER2, MMP-1, and CDK7. Thus, it is recommended to test the Lapatinab on a wide range of cancer cell lines, in addition *in-vivo* application of Lapatinab and the evaluation the synergetic potential of different factions from different types of venoms on the anticancer potential.

6. Acknowledgment

The author is immensely grateful to the faculty of Biotechnology, October University for Modern Sciences and Arts and to Vacsera for giving the permission to carry out this present work. Furthermore, the author would like to show gratitude to Prof. Ayman Diab, Dr. Gehan Safwat, Dr. Ahmed Nada, Dr. Osama Saad, Ms. Gihan Hammad, and Ms. Shaza Ahmed for sharing their pearls of wisdom with us during the course of this research.

References

- [1] **Aydiner, A. (2016)**. Treatment of HER2-Overexpressing Metastatic Breast Cancer. *Breast Disease*, 535-573. doi:10.1007/978-3-319-26012-9_33
- [2] **Ayman, M., Fahmy, A., Bakkar, A., Shbel, R., Sabathier, J., (2017)**. The bacillus calmette green derived purified protel (PPD) potentialities *in-vitro* anti-cancer activity of cerastes cerastes snake venom in colon and prostate cancer cells. *Inventi rapid: Molecular Pharmacology* vol. 2017, issue 1
- [3] **Burke, W. M., Jin, X., Lin, H., Huang, M., Liu, R., Reynolds, R. K., & Lin, J. (2001)**. Inhibition of constitutively active Stat3 suppresses growth of human ovarian and breast cancer cells. *Oncogene*, 20(55), 7925-7934. doi:10.1038/sj.onc.1204990

- [4] **Drigla, F., Balacescu, O., Visan, S., Bisboaca, S. E., Berindan-Neagoe, I., & Marghitas, L. A. (2016).** Synergistic effects induced by combined treatments of aqueous extract of propolis and venom. *Clujul Medical*, 89(1), 104. doi:10.15386/cjmed-527
- [5] **Jo, M., Park, M. H., Kollipara, P. S., An, B. J., Song, H. S., Han, S. B., Hong, J. T. (2012).** Anti-cancer effect of bee venom toxin and melittin in ovarian cancer cells through induction of death receptors and inhibition of JAK2/STAT3 pathway. *Toxicology and Applied Pharmacology*, 258(1), 72-81. doi:10.1016/j.taap.2011.10.009
- [6] **Kaczyńska, A., & Herman-Antosiewicz, A. (2016).** Combination of Lapatinab with isothiocyanates overcomes drug resistance and inhibits migration of HER2 positive breast cancer cells. *Breast Cancer*, 24(2), 271-280. doi:10.1007/s12282-016-0700-9
- [7] **Medina, P., & Goodin, S. (2008).** Lapatinab: A dual inhibitor of human epidermal growth factor receptor tyrosine kinases. *Clinical Therapeutics*, 30(8), 1426-1447. doi:10.1016/j.clinthera.2008.08.008
- [8] **Oršolić, N. (2011).** Bee venom in cancer therapy. *Cancer Metastasis Reviews*.31: 173. doi:10.1007/s10555-011-9339-3
- [9] **Park, M. H., Choi, M. S., Kwak, D. H., Oh, K., Yoon, D. Y., Han, S. B., Hong, J. T. (2010).** Anti-cancer effect of bee venom in prostate cancer cells through activation of caspase pathway via inactivation of NF- κ B. *The Prostate*, 71(8), 801-812. doi:10.1002/pros.21296
- [10] **Pollán, M. (2010).** Epidemiology of breast cancer in young women, *Breast Cancer Research and Treatment*, vol. 123, no. 1, supplement, pp. 3–6.
- [11] **Puliyel, M., Mainous, A., Berdoukas, V., & Coates, T. (2015).** Iron toxicity and its possible association with treatment of Cancer: Lessons from hemoglobinopathies and rare, transfusion-dependent anemias. *Free Radical Biology and Medicine*, 79, 343–351. PMID: 2546327
- [12] **Rycaj, K., and Tang, G. (2015).** Cell-of-origin of cancer versus cancer stem cells: Assays and interpretations. *Cancer Research*, 75(19), 4003–4011. PMID: 26292361
- [13] **Siegel, R. L., Miller, K. D., & Jemal, A. (2016).** Cancer statistics, 2016. *CA: a cancer journal for clinicians*, 66(1), 7-30.
- [14] **Siegel, R., DeSantis, C., Virgo, K., Stein, K., Mariotto, A., Smith, T., & Lin, C. (2012).** Cancer treatment and survivorship statistics, 2012. *CA: a cancer journal for clinicians*, 62(4), 220-241.
- [15] **Walker, R. A., Lees, E., Webb, M., & Dearing, S. J. (1996).** Breast carcinomas occurring in young women (< 35 years) are different, *British Journal of Cancer*, vol. 74, no. 11, pp. 1796–1800