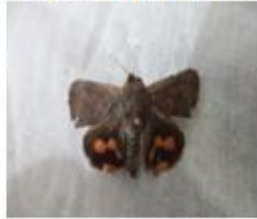


Family: Lasiocampidae



Estigena pardalis

Family –Hyblaeidae



Hyblaea puera

Family-Uraniidae



Micronia aculeate

Family: Lasiocampidae



Estigena pardalis

Family –Hyblaeidae



Hyblaea puera

Family-Uraniidae



Micronia aculeate

Family: Sphingidae



Therata alecto alecto (linn.)



Diaphnis nerii



Nephela hespera

Family: Noctuidae



Asota caricae



Ophiusa algira



Sphingomorpha chlorea



Spirama retorta



Irigonodes hyppasia



Opiusa tirhaca(cramer)

Family: Crambidae



Caprinia conchylasis Guenee



Diaphnia indica