

traffic must travel through the centre of the star. For the same reason the coordinator will easily be bottleneck to traffic. Mesh topology is the most flexible topology [8] because message can take multiple paths from source to destination. If a particular router fails the ZigBee's self-healing mechanism will allow the network to search for an alternative path for the message to be passed. Following are the topologies supported by ZigBee; Star topology, Tree topology and Mesh topology.

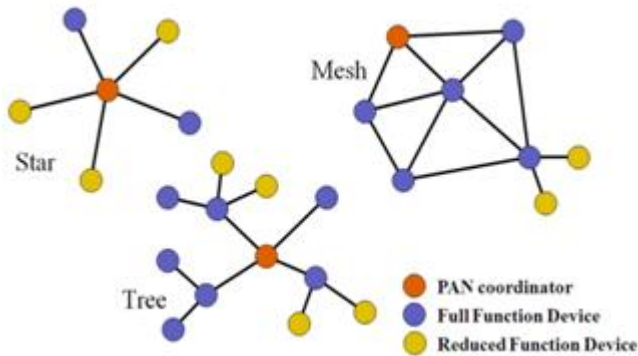


Figure 1: Network topologies supported by ZigBee

3. ZigBee protocol stack architecture

ZigBee follows the standard OSI (Open system Interconnection) reference model. Protocol stack of ZigBee has a layered structure.

The IEEE 802.15.4 defines the physical layer and the medium access layer. The specification for the physical layer defines low-power spread spectrum radio operating at frequency bands such as 2.4GHz, 915 MHz, and 868 MHz. The specification for the MAC layer defines how multiple 802.15.4 radios operating in the same area can share the airwaves.

MAC layer also defines different network topologies. The upper layers network layer and application layer are defined by the organization called ZigBee Alliance.

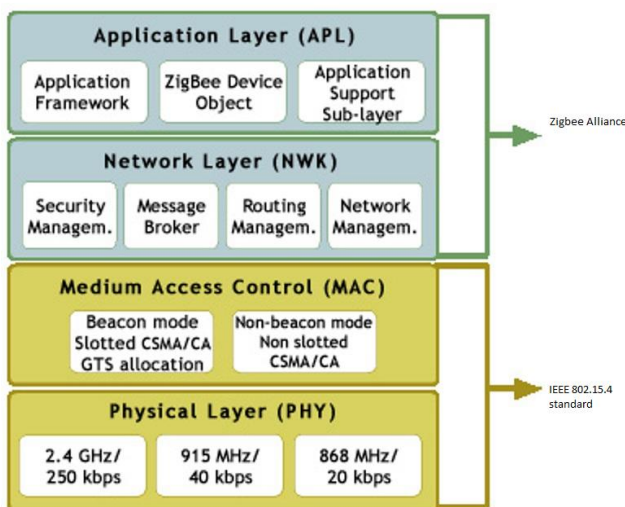


Figure 2: Protocol stack architecture of ZigBee

Physical layer: Physical layer of the IEEE802.15.4 standard controls and communicates with the radio transceiver

directly. It handles all tasks involving the access to the ZigBee hardware, including initialization of the hardware, link quality estimation, channel selection, energy detection measurement and clear channel assessment to assist the channel selection. It supports three frequency bands, 2.45GHz band which using 16 channels, 915MHz band which using 10 channels and 868MHz band using 1 channel.

MAC layer: This layer is an interface between the physical and the network layer. It performs connect and disconnect function. The IEEE 802.15.4 MAC has defined four types of frame structures: A beacon frame which is used by a coordinator to transfer beacons. Main function of MAC layer is to generate beacons and synchronize the devices to the beacon signal, in a network which is beacon enabled. The beacon frame awakes the client devices, which hear for their address and sleep again when they receive it. A data frame is used for all transmissions of data. The data frame provides up to 104 bytes of payload. An acknowledgment frame is used to confirm successful reception of frame. It sends feedback from receiver to the sender and confirms that the packet has received without any error. A MAC command frame is used to handle all MAC peer operation control transfers. MAC command frame provides a method for remote control and layout of client nodes. MAC layer provides collision avoidance mechanism and is responsible for validating frames, frame delivery, network interface and secure services.

Network layer: It interfaces between application layer and MAC Layer. This Layer is responsible for network formation and routing. Routing is the process of selection of path to relay the messages to the destination node. This forms the network involving joining and leaving of nodes, maintaining routing tables (coordinator/router), actual routing and address allocation. Route discovery is performed by ZigBee coordinator or router. This layer Provides network wide security and allows low power devices to maximize their battery life. It defines the basic topologies, star, tree Network and mesh.

Application Layer: It is the uppermost layer and it hosts the application objects. ZigBee specification separates the APL layer into three different sub-layers: the Application Support Sub layer, the ZigBee Device Objects, and Application Framework having manufacturer defined Application Objects.

1) *The application objects (APO):* Control and manages the protocol layers in ZigBee device. It is a piece of software which controls the hardware. Each application objects assigned unique end point number that other APO's can use an extension to the network device address to interact with it. There can be up to 240 application objects in a single ZigBee device. A ZigBee application must conform to an existing application profile which is accepted ZigBee Alliance.

An application profile defines message formats and protocols for interactions between application objects. The application profile framework allows different vendors to independently build and sell ZigBee devices that can interoperate with each other in a given application profile.

2) *ZigBee Device Object*: It performs three main functions; security, service discovery & binding. The security services in the ZigBee device object are responsible to authenticate and derive the required keys for data encryption. The function of discovery is to find out nodes and ask about the MAC address of the coordinator or router by using the unicast messages. The discovery also facilitates the procedure for finding some services through their profile identifiers. The role of binding manager is to bind the nodes to recourses and applications also bind the devices to channels.

3) *Application support sub layer*: The Application Support (APS) sub layer provides an interface between the NWK and the APL layers through a general set of services provided by APS data and management entities. The APS sub layer processes outgoing/incoming frames in order to securely transmit/receive the frames and establish/manage the cryptographic keys. The upper layers issue primitives to APS sub layer to use its services. APS Layer Security includes the following services: Establish Key, Transport Key, Update Device, Remove Device, Switch Key, Request Key, Entity Authentication, and Permissions Configuration Table.

4) *Security service provider*: ZigBee provides security mechanism for network layer and application support layers, each of which is responsible for securing their frames. Security services include methods for key establishment, key transport, frame protection and device management.

4. Network Model

The functions of the coordinator which usually remains in receptive mode encompass network set-up, beacon transmission, node management, storage of node information and message routing between nodes.

The network node is meant to save energy and its function includes searching for the network availability, data transfer, checks for pending data and queries for data from the coordinator. For the sake of simplicity this IEEE standard defines quarter frame structure and super frame structure used optionally only by coordinator.

The four frame structures are-

- i) Beacon frame for transmission of beacons
- ii) Data frame for all data transfers
- iii) Acknowledgement frame for successful frame receipt confirmation
- iv) MAC command frames

These frame structures and coordinators super frame structure play critical roles in security of data and integrity in transmission. The coordinator lays down the format for sending beacons after every 15.38 ms or and thereof up to 252s. This interval is determined a priori and the coordinator thus enables sixteen time slots of identical width between beacons so that channel access is contention less. Within each time slot access is contention based. The coordinator provides as many as 7 GTS for every beacon interval to ensure better quality.

5. Data Transfer Models

1. Data transmission to a coordinator: In a beacon-enabled network, the slotted CSMA/CA mechanism is used by the device which sends data to contend for channels after receiving beacons. In a non-beacon-enabled network, devices contend for channels using the unslotted CSMA/CA mechanism. After successfully obtaining a channel, a device can send data to its coordinator directly, in both kinds of networks. A coordinator that receives a data frame from a device may reply an acknowledgement (optional). Fig. shows the procedures of data transfer to a coordinator.

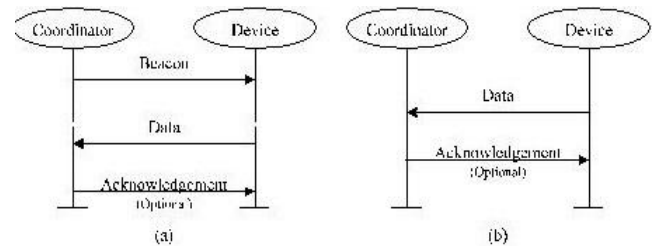


Figure 3: a) Data transmission to a coordinator in a beacon-enabled network. (b) Data transmission to a coordinator in a non-beacon-enabled network.

2. Data transmission from a coordinator: Data transmission from a coordinator is based on requests from devices. In a beacon-enabled network, instead of directly sending data frames to devices, a coordinator should notify devices that it has buffered packets by its beacons. A device that receives a beacon first check whether its ID appears in the pending data fields in the beacon. If so, this device sends a data request command to the coordinator. The coordinator, after receiving the data request, will reply an acknowledgement and forward the data frame to that device. On the other hand, in a non-beacon-enabled network, a device should periodically send data request frames to query the coordinator if there are buffered packets for itself. The coordinator, on receipt of a data request frame, should check if there are frames for the sender. If so, the coordinator will reply an acknowledgement and then send a data frame to the corresponding device.

The procedures of data transmission from a coordinator are shown in Fig.

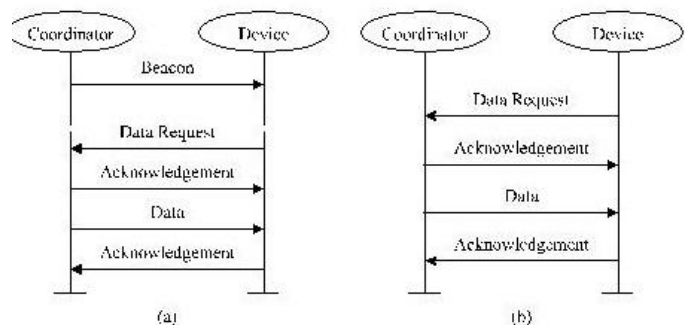


Figure 4: a) Data transmission from a coordinator in a beacon-enabled network. (b) Data transmission from a coordinator in a non-beacon-enabled network.

3. Data transmission between peers: In a beacon-enabled network, peers cannot send data to each other directly. However, peers can directly transmit data to each other in a non-beacon-enabled network. The unslotted CSMA/CA mechanism is used to contend for channels.

6. Applications

As the costs for sensor nodes and communication networks have been reduced, many other potential applications including those for civilian purposes have emerged. The following are a few examples.

- Automatic meter reading
- Building automation
- Health care monitoring
- Home automation and control
- Patient monitoring

7. Conclusion

Wireless sensor network has many applications but because of node cost and low battery life its applications are limited to scientific research and laboratory purpose. IEEE 802.15.4 /ZigBee's low cost, low data rate features solved these questions. Combination of these two, ZigBee based WSN used in almost every application like medical field, environmental monitoring, home automation and control. This paper gives details of ZigBee technology including ZigBee devices, topology models, protocol stack architecture, and data transfer models.

References

- [1] Changjiang Li, Yufen Wang, XiaojuanGuo "The Application Research of Wireless Sensor Network Based on ZigBee" in proceedings of 2010 Second International Conference on Multimedia and Information Technology.
- [2] Taehong Kim, Jinyoung Yang, "Neighbor Table Based Shortcut Tree Routing in ZigBee Wireless Networks" proceedings of IEEE transaction on parallel and distributed systems, vol. 25,no. 3, march 2014
- [3] OlfaGaddour, AnisKoubak, Omar Cheikhrouhou, MohamedAbid CES" Z-Cast: A Multicast Routing Mechanism in ZigBee Cluster Tree Wireless Sensor Networks"
- [4] Ms.Dharmistha D. Vishwakarma "IEEE 802.15.4 and ZigBee: A Conceptual Study" in proceedings of International Journal of Advanced Research in Computer and Communication Engineering Vol. 1, Issue 7, September 2012
- [5] Sunil Ghildiyal, Amit Kumar Mishra, Neha Garg "An Overview of Wireless Sensor Networks Using Zigbee Technology" International Journal of Advanced Research in Computer Science and Software Engineering Volume 4, Issue 2, February 2014
- [6] BabliKumari, Jyoti Shukla" Secure Routing in Wireless Sensor Network"International Journal of Advanced Research in Computer Science and Software Engineering Volume 3, Issue 8, August 2013
- [7] P.Rohitha, P. Ranjeet Kumar, Prof.N.Adinarayana, Prof.T.Venkat Narayana Rao4" Wireless Networking

- Through ZigBee Technology"International Journal of Advanced Research in Computer Science and Software Engineering Volume 2, Issue 7, July 2012
- [8] Divya Sharma, Sandeep Verma, Kanika Sharma"Network Topologies in Wireless Sensor Networks: A Review"IJECT Vol. 4, Issue Spt - 3, April - June 2013
 - [9] Nisha Ashok Somani ,Yask Patel "ZIGBEE: A Low power wireless technology for industrial applications" International Journal of Control Theory and Computer Modelling (IJCTCM) Vol.2, No.3, May 2012
 - [10]KanchanKaushal, Taranvir Kaur, Jaspinder Kaur "ZigBee based Wireless Sensor Networks"International Journal of Computer Science and Information Technologies, Vol. 5 (6) , 2014, 7752-7755

Author Profile

Rashmi S. Deshpande. Received the B.E degree in Electronics and Telecommunications Engineering from Pune University, Maharashtra, India in 2011. She is now pursuing Master degree in communication engineering from D.Y.P.I.E.T. Pimpri, Pune, India

Prof. L.K.Wadhwa. working as Associate Professor M. E. (ELECTRONICS) in Digital Systems from Pune in the Year 2000 Ph.D (Appeared) in ElectronicsExperience consists of 15 years of Academics