

Ultrasonographic Characteristics of Diabetes Impacts in Kidneys' Morphology

Mohammed A. Ali omer^{1,2}, Ayman H. Eljack¹, Mohamed E. Gar-elnabi¹, Ghada A. Edama¹, Mustafa Z. Mahmoud³, Muatasim Elseida¹

¹College of Medical Radiologic Sciences, Sudan University of Science and Technology, Khartoum-Sudan

²College of Applied Medical Science, Department of Radiology, Qassim University, Buraidah-KSA

³Radiology Department, College of Applied Medical Sciences, Salman bin Abdulaziz University, Al-Kharj- KSA

Abstract: A total sample size consists of 150 Diabetic male patients have been investigated by ultrasound system General Electric using gray-scale B-mode imaging with curvilinear transducer 3 MHz to assess the impact of diabetes in kidney morphology and its distribution in Sudan. The collected data were the patient age, height, weight, kidneys size, ultrasound findings of involved kidneys, and duration of diabetes and residence region. The analyzed data showed that: the diabetes has been as endemic disease in central Sudan (Khartoum & Jazeera) representing 55% and in the west of Sudan representing 38%. The BMI of diabetic patients have been significantly ($R^2=0.6$) decreasing following aging. The kidney size increases significantly as $R^2=0.75$ and 0.6 for left and right kidney respectively and their correlation fitted in the following equations: $y = 3.95x + 27.26$ and $y = 2.41x + 35.12$ for the left and right kidney respectively. The impact of duration was a reduction in size significantly as $R^2=0.61$ and 0.55 with a correlation fitted in the following equations: $y = -2.22x + 139.9$ and $y = -1.51x + 96.59$ for the left and right kidney respectively. The mean kidney length was enlarged (14.5 cm) and enlarged renal cortex in the range of 2-2.3 cm, enlarged kidneys size were 92.4 ± 11.7 and 121 ± 17.1 for the right and left kidney respectively and atrophied medulla while in late case the kidney is more echogenic, atrophied size with loss of corticomedullary differentiation.

Keywords: Ultrasound, Kidneys, Morphology, Diabetes, Impacts

1. Introduction

Diabetes mellitus is a syndrome of impaired carbohydrates, fat and protein metabolism caused by either lack of insulin secretion or decreased sensitivity of the tissue to insulin. There are two general typed of diabetes mellitus; type1 diabetes, also called Non-Insulin Dependent Diabetes Mellitus (NIDDM), is caused by lack of insulin secretion and diabetes type 2, also called Insulin Dependent Diabetes Mellitus (IDDM), is caused by decreased sensitivity of target tissue to metabolic effect of insulin. This reduced sensitivity to insulin is called insulin resistance. In both types of diabetes mellitus, metabolism of all foodstuffs is altered. Basic effect of insulin lack or insulin resistance on glucose metabolism is to prevent the efficient uptake and utilization of glucose by most cells of the body, except those of the brain. As a result, blood glucose concentration increases, cell utilization of glucose falls increasingly lower, and utilization of fats and proteins increases [1]. Also the chronic hyperglycemia of diabetes is associated with long-term damage, dysfunction, and failure of different organs, especially the eyes, kidneys, nerves, heart and blood vessels [2]. About 347 million people worldwide have diabetes [3]. In 2004, an estimated 3.4 million people died from consequences of high fasting blood sugar [4]. More than 80% of diabetes deaths occur in low- and middle-income countries [5], and the amazing foresee future is the state of WHO projects that expecting diabetes will be the 7th leading cause of death in 2030 [6]. Also the Diabetes increases the risk of heart disease and stroke, 50% of people with diabetes die of cardiovascular disease (primarily heart disease and stroke [7]. It could be combined with reduced blood flow; neuropathy, in the foot increases the chance of foot ulcers,

infection and eventual need for limb amputation. Moreover a Diabetic retinopathy is an important cause of blindness, and occurs as a result of long-term accumulated damage to the small blood vessels in the retina and about one percent of global blindness can be attributed to diabetes [8], as well it could lead to kidney failure [6] and consider as the overall risk of dying among people with diabetes relative to healthy ones [9]. Also it has been one of the most common non-communicable diseases globally and represents the fourth or fifth leading cause of death in most high-income countries and there is substantial evidence that it is epidemic in many low and middle income countries. The consequences of diabetes such as coronary artery and peripheral vascular disease, stroke, diabetic neuropathy, amputations, renal failure, reduced life expectancy and enormous health costs for virtually every society have been increasing notable [1].

An increase in body fat is generally associated with an increase in risk of metabolic diseases such as type 2 diabetes mellitus, hypertension and dyslipidaemia [10]. Body mass index (BMI) criteria are currently the primary focus in obesity treatment recommendations, with different treatment cutoff points based upon the presence or absence of obesity-related comorbid disease [10].

Renal length and volume measurements are clinically relevant, serving as surrogates for renal functional reserve, and are used frequently as the basis for making clinical decisions. Serial measurements also can provide information regarding disease progression or stability. A number of reports have described ultrasonography measurement of renal length and volume in the healthy Western population,

[11, 12], but there are scant data regarding MR measurement of renal dimensions in adults.

The kidney size of a patient is a valuable diagnostic parameter in urological and nephrologic practice, while the leading anatomy text describes the adult kidney as 12 cm long, 6 cm wide and 3 cm deep [13], further review of the literature shows that the renal size varies with age, gender, body mass index, pregnancy and comorbid conditions. Renal size may be an indicator for the loss of kidney mass and therefore, kidney function [14, 15]. It is valuable in monitoring unilateral kidney disease through comparison with the other, compensatory increased side [16]. As well, an increased BMI (25 kg/m²) has been associated with increased prevalence of diabetes mellitus, hypertension and dyslipidaemia [10]. The impact of diabetes in renal system also could be appeared as a change in cortical echogenesity and thickness in case of diabetic nephropathy relative to normal ones that have been mentioned by Benjamin et al, [17] in which they found that: the kidney lengths were 12.4 ± 0.9 cm for men and 11.6 ± 1.1 cm for women, and kidney volumes were 202 ± 36 ml for men and 154 ± 33 ml for women.

2. Method

A total sample size consists of 150 Diabetic male patients have been investigated by ultrasound system General Electric. The examinations were done using gray-scale B-mode imaging with curvilinear transducer 3 MHz for the patients who have been referred for renal system scanning. Their average ages were 46.9 ± 8.8 years old. The aim of selecting this sample was to assess the distribution of diabetes in Sudanese male and the impact of diabetes in renal morphology. The scanning was performed from posterior-lateral direction for obese patient and antero-lateral direction for thin patients. The collected data was: patient age, height, weight, kidneys size, ultrasound findings of involved kidneys, duration of diabetes and residence region. The kidneys sizes were calculated from the multiplication of width and length. Then the collected data has been analyzed in form of bar% and correlation of scatter plot.

3. Results

The following results shows the analysis of diabetic impact on renal morphology in Sudanese sample and the regional distribution of diabetes in Sudan, as Figure (1) shows the sample of diabetes distribution in the regions of Sudan during 2010, Figure (2) shows the correlation between age in yeas and BMI in (Kg/m²), Figure (3) shows the correlation between BMI in (Kg/m²) and kidney size in cm, Figure (4) shows the correlation between duration in years and kidney size in cm and Figure (5) shows the sonographic appearance of diabetes impact in renal morphology.

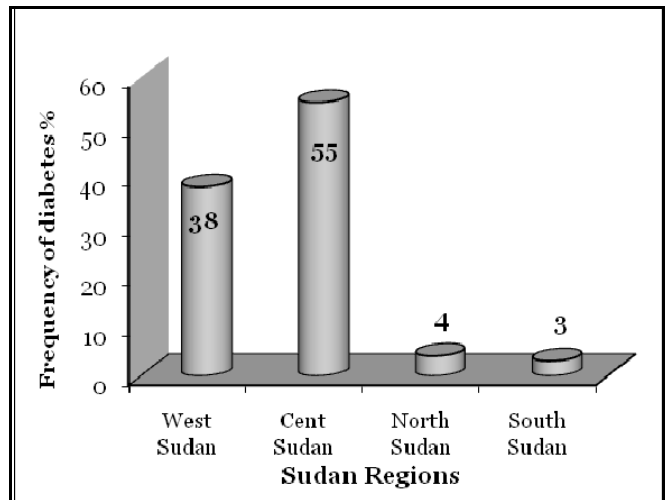


Figure 1: Shows the sample of diabetes distribution in the regions of Sudan in 2010

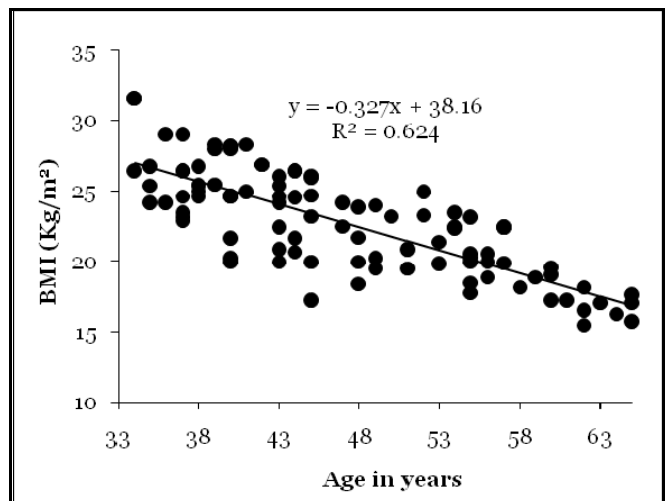


Figure 2: shows the correlation between age in yeas and BMI in (Kg/m²)

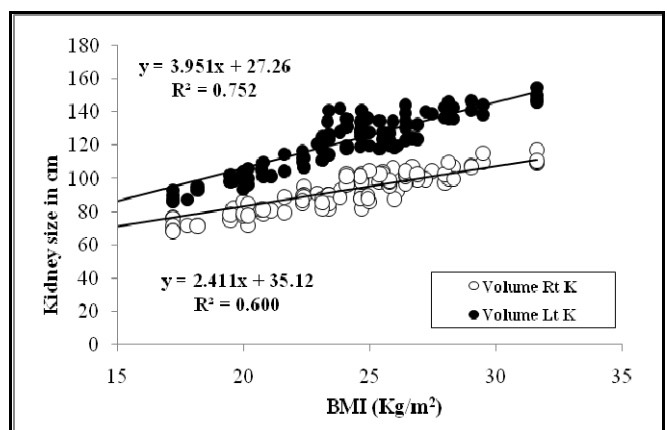


Figure 3: shows the correlation between BMI in (Kg/m²) and kidney size in cm

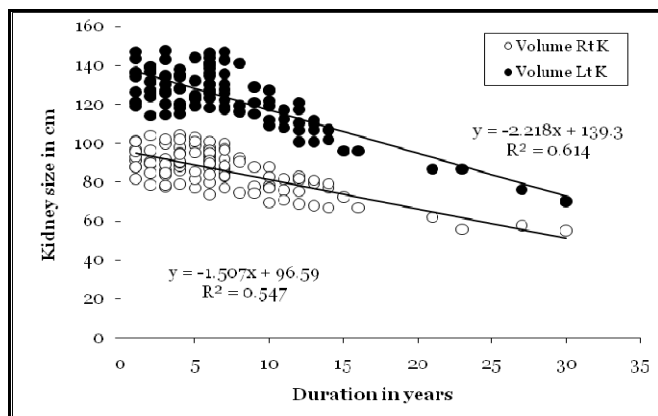


Figure 4: shows the correlation between duration in years and kidney size in cm

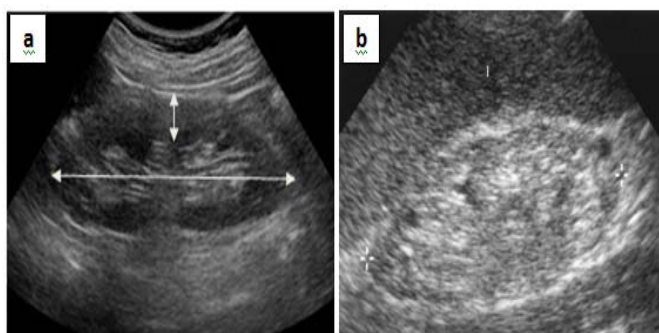


Figure 5: shows the sonographic appearance of diabetes impact in renal morphology i.e. (a) cortex enlargement and atrophied medulla and the renal enlargement greater than 14.5 cm, (b) late case in which the kidney is more echogenic with loss of cortico-medullary differentiation, the patient requiring dialysis or kidney transplantation.

4. Discussion

Figure 1 shows the sample of diabetes distribution in the regions of Sudan in 2010. It reveals that: the most endemic sector was the central of Sudan taking a 55% relative to other sectors, such high incidence could be ascribed to: intake of high unrefined carbohydrates and fat, populated sector and lifestyle.. Also the frequency has been observed highly in Western of Sudan taking a 38% which could be ascribed to ongoing economic deterioration in Western Sudan, the difficulties faced by people in accessing modern health facilities and the shortage of anti-diabetes drugs further reinforce the role of traditional systems of healing [18].

Figure 2 shows the correlation between age in years and BMI in (Kg/m^2), it reveals that the BMI decreases in a linear form following the aging among diabetic patients and its relation could be fitted in the following equations: $y = -0.33x + 38.16$, where y refers to BMI and x refers to age in years. Such correlation is significant as $R^2 = 0.6$, the decreasing phenomena could be ascribed to the decreasing of function which in turn influenced by a reduction in nitric oxide production (a potent vasodilator) in tissues [19]. In addition, there is a reduction in beta adrenergic receptor sensitivity associated with the aging process [20] which in turn reducing the ability of the sympathetic nervous system to respond to stress [21]; however this result is reversed to

normal relation between BMI and aging as mention by Forbes et al, [22]. Also failure to use glucose for energy leads to increased utilization and decreased storage of proteins as well as fats. There for a person with untreated diabetes mellitus suffers rapid weight loss and asthenia (lack of energy) despite eating large amounts of food (polyphagia). Without treatment, these metabolic abnormalities can cause severe wasting of the body tissues and death within a few weeks [1].

Figure 3 shows the correlation between BMI in (Kg/m^2) and kidney size in cm, it shows that: the Kidneys size increases following the BMI increment among diabetic patients in a form of linear relationship fitted in equations: $y = 3.95x + 27.26$ and $y = 2.41x + 35.12$ for the left and right kidney respectively, such correlation is so significant as $R^2 = 0.75$ and 0.60 respectively. Same correlation has been obtained by Raza et al, [23]. The study also reveals that: the left kidney is bigger than the right one as mentioned by Odita and Ugbodaga, [24] and Mário et al, [25]. The increment of kidneys size or hypertrophy could be ascribed to sort of physiological compensation to meet the high filtrated components from the blood stream.

Figure 4 shows the correlation between duration of diabetes in years and kidney size in cm. it reveals that the kidneys size has been decreases following the duration of the disease (diabetes) in a linear form fitted in equations: $y = -2.22x + 139.3$ and $y = -1.51x + 96.59$ for the left and right kidney respectively with significant correlation as $R^2 = 0.61$ and 0.55 respectively. However the renal hypertrophy has been observed during the early stage only and gradual reduction in size following the long duration. In this realm, Inomata, [26] and Vincent et al, [27], stated that: in humans diabetic; renal hypertrophy can persist for several years despite good glucose control; which could be ascribed to the compensation of the kidney to clear threefold incidence of micro-albumin urea and almost threefold faster decline in GFR during the 9 years [28]. Other investigators have related an increase in kidney size with an increased glomerular filtration rate in early stage diabetes mellitus while size shrinking occur in late stages which is consider as a main mark for renal failure.

Figure 5: shows the sonographic appearance of diabetes impact in renal morphology. In which the mean kidney length was 14.5 cm, an enlarged renal cortex in the range of 2-2.3 cm and atrophied medulla (a), and (b) late case in which the kidney is more echogenic with loss of corticomedullary differentiation, the patient requiring dialysis or kidney transplantation. Also the mean renal enlarged size was 92.4 ± 11.7 and 121 ± 17.1 for the right and left kidney respectively. Such results are relative to common normal cases that showed a renal cortex thickness of 1.0 – 1.6 cm and a kidney length of 9.2 – 10.8 cm as mentioned by Adibi, et al, [29] and Michael et al, [30] who found that: the mean cortical thickness was 5.9 mm (range, 3.2–11.0 mm) and the mean kidney length was 10 cm (7.2–12.4 cm).

5. Conclusions

The ultrasound scanning has been as best choice for abdominal diagnosis and diseases assessment, hence it reveals that: the diabetes has direct impact in kidney morphology in view of renal volume enlargement and cortical thickening in early stage then atrophied and became echogenic in late stage. Also there is significant correlation between kidney size and the BMI and diabetic duration. Such finding could be utilized successfully to assess the diabetes severity and stage as well as to determine the treatment model.

References

- [1] Arthour C. Guyton, John E. Hall. (2006). Text book of Medical Physiology. Elsevier Saunders. Edition 11th., p 972.
- [2] Pradeep Kumar Dabla. (2010). Renal function in diabetic nephropathy. World Journal of Diabetes vol. 1(2), P: 48-56.
- [3] Danaei G, Finucane MM, Lu Y, Singh GM, Cowan MJ, Paciorek C. J. (2011). National, regional, and global trends in fasting plasma glucose and diabetes prevalence since 1980: systematic analysis of health examination surveys and epidemiological studies with 370 country-years and 2.7 million participants. *Lancet*, vol. 378(9785), P: 31–40.
- [4] World Health Organization Global health risks. (2009). Mortality and burden of disease attributable to selected major risks, Geneva.
- [5] Mathers CD, Loncar D. (2006). Projections of global mortality and burden of disease from 2002 to 2030. *PLoS Med*, vol. 3(11), P: e442.
- [6] World Health Organization. (2011). Global status report on non-communicable diseases 2010-Geneva.
- [7] Morrish NJ, Wang SL, Stevens LK, Fuller JH, Keen H. (2001). Mortality and causes of death in the WHO Multinational Study of Vascular Disease in Diabetes. *Diabetologia*, vol. 44, Suppl 2, P: S14–S21.
- [8] World Health Organization, (2012). Global data on visual impairments 2010, Geneva.
- [9] Roglic G, Unwin N, Bennett PH, Mathers C, Tuomilehto J, Nag S. (2005). The burden of mortality attributable to diabetes: realistic estimates for the year 2000. *Diabetes Care*, vol, 28(9), P: 2130–2135.
- [10] Bays H. E., R. H. Chapman, S. Grandy. (2007). The relationship of body mass index to diabetes mellitus, hypertension and dyslipidaemia: comparison of data from two national surveys. *Int. J. Clin. Practice*, Vol. 61 (5), P: 737–747.
- [11] Allan P, Meire H, Cosgrove D, Dewbury K, Farrant P. (2001). The normal kidney. In: *Clinical Ultrasound: A Comprehensive Text*, 2nd. Ed., New York, Churchill Livingstone, P: 513–528.
- [12] Bakker J, Olree M, Kaatee R, de Lange EE, Moons KG, Beutler JJ, Beek FJ. (1999). renal volume measurements: Accuracy and repeatability of US compared with that of MR imaging. *Radiology*, vol. 211, P: 623–628.
- [13] Susan Standring, Neil R. Borley, Patricia Collins, Alan R. C. and Micheal A. G. (2008), *The anatomical basis of clinical practice (Gray's Anatomy)*, 4th. Edition, Churchill Livingstone-Spain.
- [14] Shcherbak A. L. (1989). Angriographic criteria in the determination of indications for organ preserving surgery in renal artery occlusion. *Klin. Khir*, 2: 5.
- [15] Guzman R. P. Zierler RE, Isaacson J. A. (1994). Renal atrophy and arterial stenosis. A prospective study with duplex ultrasound. *Hypertension* vol. 23, P: 346-47.
- [16] Yamaguchi S. Fujii H, Kaneko S. (1990). Ultrasonographic study in patients with chronic renal failure. Part 1. Ultrasonic measurement of renal size and analysis of renal ultrasonotomograms. *Nippon Hinyokika Gakkai Zasshi*, vol. 81, P: 1175-77.
- [17] Benjamin Cheong, Raja Muthupillai, Mario F. Rubin, and Scott D. Flamm. (2007), Normal Values for Renal Length and Volume as Measured by Magnetic Resonance Imaging. *Clin J Am Soc. Nephrol*. Vol. 2, P: 38 - 45.
- [18] Ahmed Awad M. (2006). Diabetes Care in Sudan Emerging Issues and acute Needs, *Diabetes Voice* vol. 51 (3), P: 1-15.
- [19] Stadler K, Jenei V, von Bolshazy G, Somogyi A, Jakus J. (2003). Increased nitric oxide levels as an early sign of premature aging in diabetes. *Free Radic Biol Med*. vol. 15(35), P: 1240-1251.
- [20] Schutzer WE, Mader SL: (2003). Age-related changes in vascular adrenergic signaling: clinical and mechanistic implications. *Ageing Res. Rev*. vol. 2(2), P: 169-1690.
- [21] Jerrold Petrofsky, Scott Lee and Maria Cuneo. (2005). Effects of aging and type 2 diabetes on resting and post occlusive hyperemia of the forearm; the impact of rosiglitazone. *BMC Endocrine Disorders*, 5: 4.
- [22] Forbes GB, Reina JC. (1970). Adult lean body mass declines with age: some longitudinal observations. *Metabolism*; vol. 19, P: 653-662.
- [23] Raza M, Hameed A, Khan M. (2011). Ultrasonographic assessment of renal size and its correlation with body mass index in adults without known renal disease. *Journal of Ayub Med College Abbottabad*; vol. 23, (3), P: 64-68.
- [24] Odita JC. Ugbo-daga CI. (1982). Roentgenologic estimation of kidney size in adult Nigerians. *Trop. Geogr. Med.*, Vol. 34, P: 177-179.
- [25] Mário M. T. Fernandes, Carla C. S. Lemos, Guilherme S. Lopes, Eugenio P. Q. Madeira, Omar R. Santos, David Dorigo, Raquel Bregman. (2002). Normal renal dimensions in a specific population. *International Braz J Urol*, vol. 28 (6), P: 510-515.
- [26] Inomata S. (1993). Renal hypertrophy as a prognostic index for the progression of diabetic renal disease in non insulin-dependent diabetes mellitus. *J. Diabetes Complications*, vol. 7, P: 28-33.
- [27] Vincent Rigalleau, Magalie Garcia, Catherine Lasseur, François Laurent, Michel Montaudon, Christelle Raffaitin, Nicole Barthe, Marie-Christine Beauvieux, Benoit Vendrely, Philippe Chauveau, Christian Combe, Henri Gin. (2010). Large kidneys predict poor renal outcome in subjects with diabetes and chronic kidney disease. *BMC Nephrology*, 11 (3), P: 1471-2369.
- [28] Zerbini G, Bonfanti RN, Meschi F, Bognetti E, Paesano PL, Gianolli L, Querques M, Maestroni A, Calori G, Del Maschio A, Fazio F, Luzi L, Chiumello G: (2006). Persistent renal hypertrophy and faster decline of glomerular filtration rate precede the development of

microalbuminuria in type 1 diabetes. Diabetes, Vol. 55, P: 2620-2625.

[29] Adibi A., A. Emami Naini, H. Salehi and M. Matinpour. (2008). Renal Cortical Thickness in Adults with Normal Renal Function Measured by Ultrasonography. Iran J. Radiology, vol. 5(3), P: 163-166.

[30] Michael D. Beland, Nicholas L. Walle, Jason T. Machan and John J. Cronan. (2010), Renal Cortical Thickness Measured at Ultrasound: Is It Better Than Renal Length as an Indicator of Renal Function in Chronic Kidney Disease? AJR vol. 195, P: 146-149.

Author Profile



Ayman Hamza Eljack: Award B. Sc. in Diagnostic Radiology and M. Sc. in Medical Ultrasound from Sudan University of Science and Technology in 1995, 2001 respectively. He has been working as a lecturer at College of Medical Radiologic Science-Sudan and ultrasound specialist at Tropical Diseases Teaching

Hospital since 1999 to date. Now he has been as Ph. D. candidate at Sudan University of Science and Technology.



Mohammed Ahmed A. Omer: received the B. Sc. -1. in Radiotherapy and Nuclear Medicine, B. Sc.-2 in Medical Equipments Technology and M.Sc. degrees in Medical Physics from Sudan University of Science and Technology in 1995, 1998 and 2001, respectively.

He has been working as medical and radiation technologist at Radiation and Isotopes Center of Khartoum as well as a lecturer at College of Medical Radiologic-Sudan Award Ph. D. degree from University Putra Malaysia - 2007 in Medical physics-Applied Radiation. Now he is working as a lecturer (Associate Prof.) at Qassim University-Buraidah-KSA.



Mohamed Elfadil M. Gar-elnabi: received the B. Sc. in Radiotherapy and Nuclear Medicine, and M.Sc. degrees in Medical Physics from Sudan University of Science and Technology in 1995 and 2001 respectively. He has been working as medical

physicist and radiation technologist at Radiation and Isotopes Center of Khartoum as well as a lecturer at College of Medical Radiologic Science, Sudan University of Science and Technology. He received a Ph. D. degree from Natal University South Africa - 2007 in Medical physics. Now he is working as a lecturer (Associate Prof.) at Sudan University of Science and Technology-Khartoum-Sudan.



Ghada Abker Edam Sakin: Awarded B. Sc. Degree in Nuclear Medicine in 2010 from National Ribat University-Sudan and M. Sc. from College of Medical Radiologic Science-Sudan University of Science and Technology 2013. She has been working as a lecturer

(part timer) at Sudan University of Science and Technology-department of Radiotherapy and Nuclear Medicine as well as NM technologist at RICK since up to date. Now as a Ph. D. candidate in same field at SUST