

Use of AI in PCB Making

Anita Subhash Bhandare

Maharashtra, India

Email: anitabhandare26[at]gmail.com

Abstract: *The integration of Artificial Intelligence (AI) in electronics is a rapidly expanding interdisciplinary field, transforming both the design and operational capabilities of electronic systems. Multiple recent academic and industry publications provide a solid foundation for understanding the scope, benefits, and challenges of AI applications. The integration of AI into electronics involves embedding machine learning (ML) models and AI processors (NPUs, TPUs, DSPs) directly into hardware or firmware. This allows devices to process data locally- without relying on cloud servers- improving response time and privacy.*

Keywords: Machine learning (ML), Artificial Intelligence (AI), Printed Circuit Board (PCB), Electronic Design Automation (EDA)

1. Literature

Artificial intelligence (AI) is revolutionizing many industries, including printed circuit board (PCB) technology. From optimizing PCB layout and design to improving the surface mount manufacturing process, AI adds a game-changing element, more specifically, in terms of efficiency and precision. Using artificial intelligence in manufacturing processes may provide higher quality and faster production times, reduce costs, and minimize errors.

PCB design involves a multitude of tasks, ranging from circuit design to PCB layout and preparation for production. As of 2023, there is no single system that will handle all of your engineering and PCB design tasks. But the range of

options available today is impressive, both in the design and manufacturing space.

AI is not a complete replacement for human expertise. Complex designs still require engineering judgment, creativity, and domain knowledge. Additionally, AI-driven tools may have limitations in understanding unique design constraints and industry-specific requirements.

Integrating AI into your workflow can streamline processes, but it is best used as an augmentation tool rather than a full replacement for traditional methods. Engineers should leverage AI to handle repetitive tasks and analyze complex datasets while retaining control over critical design decisions [1].

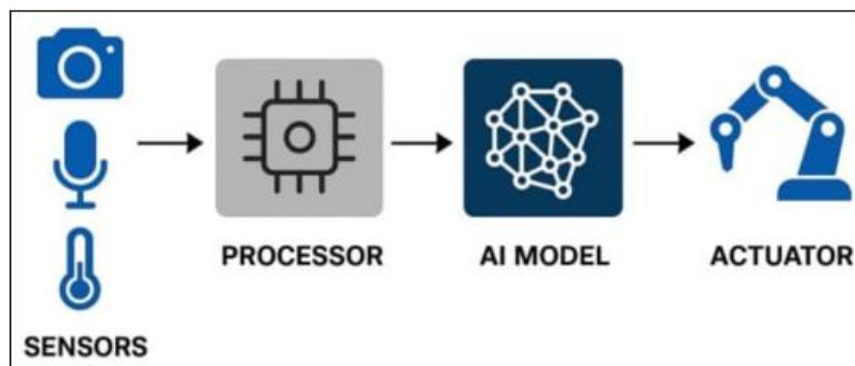


Figure 1.1: Integration of AI in Electronics

Advantages of AI for PCB Design:

- Faster research
- Automating manual processes
- Better informed design decisions

Disadvantages of AI for PCB Design:

- Inaccurate component information
- Limited design complexity
- Limited EDA Tool integration

How to Effectively Use AI for PCB Design

- Clearly understand what AI can and cannot do for your design process.
- Choose an AI program or application that easily integrates with your EDA tool(s).
- Ensure that any data sourced, for example component datasheet information, is from a reliable source.

2. How AI Optimizes PCB Design

AI is revolutionizing PCB layout and design by addressing many of the challenges associated with traditional methods. AI-powered solutions bring automation, efficiency and precision to the design process. This efficiency level helps increase productivity and the quality of the final PCB [2].

1) Automated Design Optimization

AI algorithms excel at analyzing vast amounts of data and performing complex calculations quickly. In PCB design, AI can optimize component placement and routing based on predefined design rules and objectives. They use historical design data and machine learning (ML) models, helping them suggest layouts that minimize signal interference. Engineers

can use AI to improve thermal management and enhance performance with these insights.

2) Streamlined Workflow

AI tools can streamline the workflow by automating repetitive tasks that traditionally require manual intervention. For instance, AI algorithms can generate multiple design iterations in a fraction of the time it would take a human designer. This acceleration allows engineers to explore more design possibilities and select the most optimal layout sooner in the development cycle.

3) Predictive Analysis and Simulation

AI enables predictive analysis and simulation of PCB designs before physical prototypes are built. Engineers can use AI models to simulate electrical performance, thermal behaviour and mechanical stress under various operating conditions. This capability reduces the need for extensive physical testing. As such, AI can also help lower development costs and speed up time-to-market (TTM). There are various ways of reducing PCB costs and turnaround times- AI is one of the many avenues.

4) Enhanced Accuracy and Reliability

Unlike human designers, AI algorithms do not suffer from fatigue or subjectivity. They consistently apply design rules and constraints with precision. AI's precision helps minimize the risk of errors and ensure PCB layouts meet stringent performance criteria. Their reliability translates into higher-quality PCBs with improved reliability and manufacturability.

5) Real-Time Collaboration and Feedback

AI can facilitate real-time collaboration between engineers by providing immediate feedback on design changes. Design teams can interact with AI systems in many ways. They can use AI to explore alternative design scenarios, evaluate trade-offs and make informed decisions based on data-driven insights.

3. Challenges in PCB Layout

Designing a PCB involves many difficult tasks, which determine the board's functionality and reliability. Here are the critical challenges faced in PCB layout design:

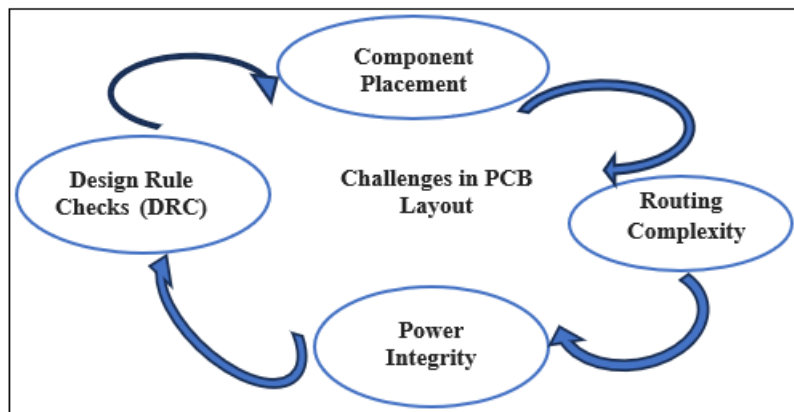


Figure 1.2: Challenges in PCB Layout

4. How AI Helps with PCB Layout

The use of technology in PCB layout design brings many benefits and opportunities. Here's how AI and ML algorithms address the complexities and challenges inherent in traditional design processes:

1) Automated Design Optimization

AI algorithms can automate and optimize component placement and routing. By examining various aspects of PCB layout design – like design restrictions, electrical performance needs and thermal factors – AI can produce layouts that minimize signal interference. AI may even help lower power consumption and enhance board performance.

2) Predictive Analysis and Simulation

AI enables predictive analysis and simulation of PCB designs. Engineers can use AI-powered tools to simulate different characteristics and behaviours under various operating conditions. This capability helps identify potential design flaws early in the development cycle, reducing the need for costly physical prototypes and accelerating TTM.

3) Real-Time Design Assistance

AI tools can provide real-time assistance to engineers during the design process. For example, AI-powered design assistants can suggest optimal component placements, routing paths and layer configurations. Their recommendations are based on historical data and ML models. It's a collaborative approach that enhances design creativity and efficiency while ensuring designs meet performance targets.

4) Enhanced Design Verification

AI may enhance DRC capabilities by automating the verification process against design rules and specifications. AI algorithms can quickly identify potential violations – like spacing violations or incorrect trace widths – and provide actionable insights to engineers. This proactive approach minimizes design errors and can improve design quality.

5) Iterative Improvement

AI continuously learns from previous design iterations and user feedback, improving its design recommendations over time. Engineers can benefit from AI's ability to iterate quickly through design options, explore alternatives and refine layouts to achieve optimal performance and manufacturability.

6) Integration With CAD Tools

AI can also integrate with computer-aided design (CAD) tools commonly used in PCB design. This integration may improve the functionality of existing design software by adding AI-driven features. Examples of these features include layout optimization, design validation and automated documentation generation.

5. AI Can Automate PCB Manufacturing

AI can introduce advanced technologies that enhance PCB manufacturing efficiency, quality and cost-effectiveness:

1) Automated Visual Inspection

AI-powered visual inspection systems may significantly improve inspection accuracy and speed. Using ML algorithms, these systems can analyze images of PCBs to detect defects such as soldering defects, component misplacements or hairline cracks that human inspectors may miss. This automation reduces inspection time and boosts product quality.

2) Predictive Maintenance

AI can help with predictive maintenance in PCB manufacturing equipment. By analyzing real-time sensor data from machines involved in the surface mount manufacturing process, AI algorithms can predict equipment failures before they occur. This proactive approach minimizes unplanned downtime and maintenance costs and ensures continuous production flow.

3) Quality Assurance Enhancement

AI can continuously monitor manufacturing processes. ML models can analyze data from various production stages to identify trends, anomalies or potential issues early on. This capability allows manufacturers to implement corrective actions quickly, improving product consistency and reliability.

4) Cost Optimization

AI-driven analytics can help optimize manufacturing costs by identifying process inefficiencies. AI algorithms can analyze production data to optimize material usage, reduce scrap rates and improve yield rates. This data-driven approach helps manufacturers save costs without compromising product quality or performance.

5) Real-Time Decision Support

AI provides manufacturing personnel with real-time decision support. AI systems can analyze and interpret vast amounts of data, providing valuable insights into areas such as production scheduling, supplier selection and process optimization. This capability helps with agile decision-making that aligns with business objectives and market demands.

6) Enhanced Supply Chain Management

AI can help predict demand fluctuations and optimize inventory levels. Algorithms analyze historical data, market trends and other external factors to recommend optimal procurement strategies and mitigate supply chain risks. This proactive management reduces lead times and ensures timely delivery of PCBs to customers.

6. Challenges in PCB Design

Traditional PCB design processes have long relied on manual processes. These methods are effective, but they come with several challenges that can slow the design process, introducing errors that affect the final circuit board's function and reliability.

1) Complexity and Time Consumption

Designing a PCB involves placing components and routing connections so they function correctly. This process becomes increasingly complex as circuits become more intricate and compact. Engineers must calculate trace widths, component placements and signal paths manually. This process is slow and prone to human error.

2) Trial and Error Iterations

Getting an optimal PCB layout often requires many iterations of trial and error. Engineers may need to repeatedly adjust component placements and routing to meet design specifications, ensure signal integrity and manage thermal considerations. Each iteration cycle can prolong the design phase and increase development costs.

3) Risk of Signal Interference and Heat Dissipation Issues

Incorrect placement of components or inefficient routing can lead to signal interference, noise or heat dissipation problems. These issues can degrade the PCB's performance, reliability and even its longevity. If these problems arise, redesigns must be made, thus potentially delaying product launches.

4) Skill and Experience Dependency

Effective PCB layout and design require specialized knowledge and experience. As experienced engineers retire, there's a growing concern about transferring this expertise to younger engineers with different practical knowledge.

Following are the companies who are using AI tools in PCB Design:

India has a growing ecosystem of startups and engineering tool providers applying AI to automate PCB design workflows. These companies focus on intelligent placement, routing, schematic generation, and design-rule compliance.

Table 1: Major Companies Using AI for PCB Design in India

Sr. No.	Name of company	Area of uses
1	ZiroEDA- IIT Madras, Chennai	Generates multiple layout candidates validated for SI, impedance, thermal, and manufacturability.
2	Autocuro Technologies- Delhi	Expected product launch in 2026.
3	Epesign Technologies- Bangalore	Not exclusively an AI company, but part of India's PCB design innovation ecosystem.
4	Wire AI- Bangalore	Uses a domain-specific model trained on thousands of datasheets and design files.

7. Advantages of AI Integration

- **Enhanced Efficiency:** Reduction in design time, manufacturing errors, and post-production defects.
- **Predictive Capabilities:** Early detection of faults and maintenance needs reduces downtime.
- **Smarter Automation:** Devices and factory processes adapt intelligently to changing conditions.
- **Personalization:** Devices respond to individual user behavior or environmental changes.
- **Energy Optimization:** AI-driven decision-making reduces energy consumption in devices and industrial systems.

8. Challenges and Limitations

- **Computational Resources:** High-performance processors and hardware accelerators (GPU, NPU, FPGA) are necessary for AI execution.
- **Data Dependency:** AI effectiveness relies on large, high-quality datasets, which may be scarce in some electronics domains.
- **Integration Complexity:** Combining AI with analog, digital, and mixed-signal circuits requires multidisciplinary expertise.
- **Thermal Management & Power Consumption:** Intensive AI computations introduce heat and energy concerns.
- **Cost & Skills Gap:** High development costs and a shortage of engineers with AI-electronics expertise.
- **Ethical & Privacy Concerns:** Particularly relevant for devices that monitor user behavior or collect sensitive data.

9. Future Trends

- **Edge AI and Low Power AI Chips:** Deployment of AI computation directly on devices to reduce latency and enhance privacy.
- **Integration with IoT & Cyber-Physical Systems:** Real-time decision-making across smart environments.
- **Generative Design & Simulation:** AI-based design optimization for innovative, lightweight, and efficient components.
- **Explainable AI (XAI):** Enhancing transparency and interpretability in automated decision-making for better human-machine collaboration.
- **Digital Twins:** Realtime simulation and predictive analytics enabled by AI for industrial manufacturing and electronic device management.

10. Conclusion

AI is revolutionizing electronics by enhancing design, manufacturing, and operational efficiency across multiple domains including consumer products, industrial automation, semiconductor fabrication and medical devices. While challenges such as computational demands, system integration complexity and ethical concerns remain, continued development of edge AI, explainable models, and intelligent hardware is expected to drive widespread adoption and further innovations in electronics.

The field represents a synergy between computer intelligence and electronic engineering, enabling devices to be smarter, autonomous, and adaptive in real time.

References

- [1] Integrating Artificial Intelligence in Electronics, Telecommunication, and Mechanical Engineering: Applications, Challenges, and Future Prospects. IJIRT. Link
- [2] Rekha. Applications of Artificial Intelligence in Electronics. IJISAE. Link
- [3] Shubham R. Ekature. Artificial Intelligence in Semiconductor and Electronic Manufacturing. EJAET, 2024. Link
- [4] Gwanggil Jeon. Artificial Intelligence Techniques for Electronics. MDPI Electronics. Link
- [5] Integration of AI in Electronics: Applications, Benefits & Challenges. Watelectronics. Link