

Live Tissue Metabolic Pathology: Can Cell Metabolism Testing Complement Conventional Tissue Pathology?

Karishma Pilankar

Student, Podar International School, Ratnagiri, Maharashtra 415639, India

Corresponding Author Email: [karishmakpilankar\[at\]gmail.com](mailto:karishmakpilankar[at]gmail.com)

Abstract: *Traditional tissue pathology relies on examining fixed and stained tissue samples using microscopy in order to diagnose diseases. Recent advances in digital pathology, live-cell imaging, biosensor technology, and Artificial Intelligence have created possibility of studying cellular metabolism in living tissues. This review article evaluates whether live tissue metabolic pathology can replace conventional tissue pathology in future clinical practice. Published studies involving Raman spectroscopy, stain-free microscopy, metabolic imaging, and AI-assisted pathology were reviewed and analyzed. Existing literature suggests that metabolic pathology may allow earlier disease detection through functional and biochemical analysis before structural abnormalities become visible. Technologies such as Raman Spectroscopy and AI-based computational systems have demonstrated promising applications in cancer diagnosis, live-cell monitoring, and digital pathology workflows. However, several limitations including technical complexity, cost, lack of standardization, and inability to fully replace microscopic tissue morphology remain major barriers. Current evidence suggests that live tissue metabolic pathology is more likely to complement rather than completely replace conventional tissue pathology. Future integration of AI, metabolic imaging, and digital pathology may contribute to the development of “living digital pathology” systems for precision medicine.*

Keywords: Medical Sciences; Digital Pathology; Live Metabolism; AI Diagnostics

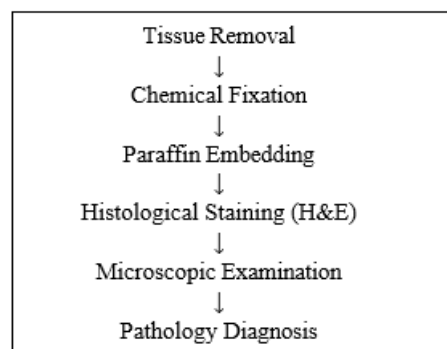
1. Introduction

Conventional tissue pathology is considered the gold standard for disease diagnosis. Tissue specimens are typically fixed, processed, stained, and examined microscopically to identify structural abnormalities associated with diseases such as cancer, infections, and inflammatory disorders. Although this method provides detailed morphological information, the cells being studied are no longer alive in this study.

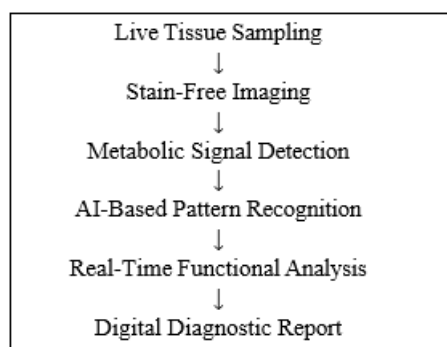
Recent advances in live-cell imaging, biosensor technologies, computational pathology, and AI-assisted diagnostics have created interest in studying living tissue metabolism in addition to structural changes. Cellular metabolism refers to biochemical processes that allow cells to generate energy, consume oxygen and glucose, and maintain biological function. Abnormal metabolic activity is often observed in cancer cells and diseased tissues before visible structural changes appear.^{1,2}

Several recent studies have explored the use of Raman spectroscopy, fluorescence metabolic imaging, and stain-free digital pathology systems to analyze living tissues in real time.^{3,4} These technologies may improve early disease detection and enable functional analysis of tissues without requiring traditional histological staining. AI-assisted digital pathology systems further enhance interpretation by identifying complex metabolic and imaging patterns automatically.^{5,6}

The workflow differences between conventional tissue pathology and live metabolic pathology are summarized in Figure 1.



Conventional Tissue Pathology



Live Tissue Metabolic Pathology

Figure 1: Conventional versus live tissue pathology workflow.

While review articles discussing digital pathology and AI-assisted diagnostics already exist, this review specifically focuses on the emerging concept of live tissue metabolic pathology and critically evaluates whether it has the potential to replace conventional tissue pathology in the future.

Code and Data Availability

No original experimental code or datasets were generated in this review article. All information was obtained from previously published scientific literature and review articles.

2. Results and Discussion

Conventional Histopathology and Its Limitations

Conventional histopathology remains the foundation of diagnostic pathology worldwide. Tissue fixation and staining techniques such as hematoxylin and eosin staining provide highly detailed structural information that pathologists use for diagnosis and tumor grading.⁷ However, fixation terminates cellular activity and prevents observation of real-time biological function.

Several limitations of conventional pathology have been discussed in published literature, including delayed processing time, observer variability, and inability to study dynamic cellular metabolism.²

Role of Metabolic Imaging in Disease Detection

Metabolic imaging technologies attempt to evaluate cellular activity rather than only tissue structure. Raman spectroscopy is among the most promising methods because it enables label-free biochemical analysis of living tissue.³ Studies have demonstrated that Raman-based systems can identify biochemical signatures associated with cancer and neurological diseases.^{4,8}

Fluorescence metabolic imaging has also shown potential for monitoring oxygen utilization, glucose metabolism, and mitochondrial activity in living tissues.⁹ Such technologies may allow disease detection before visible histological abnormalities appear. This functional approach differs significantly from traditional pathology, which mainly evaluates tissue morphology.

However, despite these advantages, metabolic imaging currently lacks the level of structural detail provided by standard histopathology. Most published studies remain experimental and are not yet widely integrated into routine clinical practice.

Artificial Intelligence and Computational Pathology

AI-assisted digital pathology systems are increasingly being applied in tissue diagnosis, computational pathology, and automated image analysis^{5, 6}. Machine-learning algorithms can rapidly analyze large imaging datasets and detect subtle patterns that may not be easily recognized by human observation alone.

Several researchers have proposed integrating AI with Raman spectroscopy and stain-free microscopy to create real-time diagnostic platforms.¹⁰ Such systems could potentially combine structural and metabolic information simultaneously. Computational pathology may therefore serve as an important bridge between conventional histology and future metabolic pathology systems.

The integration of AI with metabolic imaging technologies is illustrated in Figure 2.

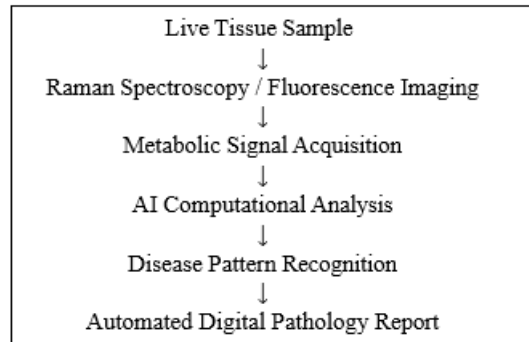


Figure 2: AI-assisted metabolic pathology system

Nevertheless, AI-assisted diagnosis still requires extensive validation, standardization, and regulatory approval before widespread adoption. Ethical concerns regarding algorithm transparency and clinical reliability also remain important challenges.

Can Metabolic Pathology Replace Conventional Tissue Pathology?

The literature reviewed suggests that live tissue metabolic pathology currently cannot fully replace conventional tissue pathology. Histopathological examination remains essential for evaluating tissue architecture, cellular morphology, tumor invasion, and grading.⁷

However, metabolic pathology may become a powerful complementary technology. Functional imaging and AI-assisted analysis could improve early disease detection, monitor treatment response, and contribute to personalized medicine strategies. Future systems may combine conventional histopathology with metabolic and computational analysis to create integrated “living digital pathology” workflows.

Current evidence therefore supports the idea that metabolic pathology is more likely to augment rather than completely replace traditional pathology in the near future.

A future hybrid diagnostic model combining structural and functional pathology is proposed in Figure 3. This model may assist in earlier and precise disease diagnosis

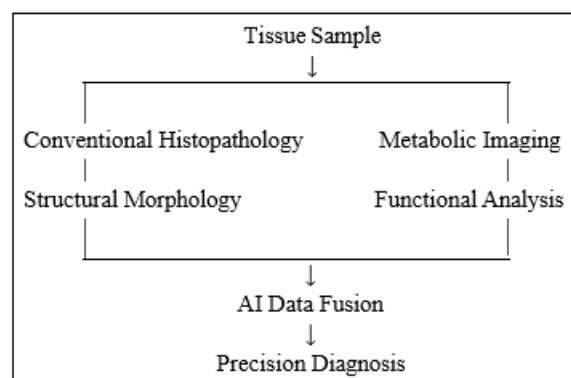


Figure 3: Future hybrid pathology model integrating structural and metabolic analysis.

3. Conclusion

This review evaluated the emerging concept of live tissue

metabolic pathology and its potential role in future diagnostic medicine. Published studies indicate that metabolic imaging, Raman spectroscopy, stain-free microscopy, and AI-assisted computational pathology may improve functional analysis and early disease detection.

Despite these advances, conventional histopathology continues to remain the gold standard because of its ability to provide detailed structural and morphological information. Technical limitations, lack of standardization, and limited clinical validation currently prevent metabolic pathology from replacing conventional pathology entirely.

Future integration of AI, live-cell metabolic imaging, and digital pathology may lead to hybrid diagnostic systems that combine structural and functional analysis for precision medicine applications. Additional research and clinical studies are necessary before these technologies can become routine diagnostic tools.

Acknowledgements

I would like to acknowledge my mentor Dr. Kirtikumar who has been working in conventional pathology over last 22 years. I am thankful for his constant guidance and support, as well as giving me insight into the world of AI assisted pathology. Also I acknowledge all researchers working in the fields of digital pathology, Raman spectroscopy, computational pathology, and AI-assisted medicine whose published work contributed to this review article.

References

- [1] Nambudiri MKK et al. Artificial Intelligence-Assisted Stimulated Raman Histology. 2024.
- [2] Zhang XM et al. Artificial Intelligence in Digital Pathology Diagnosis and Analysis. 2025.
- [3] Lee M et al. Recent Advances in the Use of Stimulated Raman Scattering in Histopathology.
- [4] *Analyst*. 2021.
- [5] Lita A et al. Raman-Based Machine-Learning Platform Reveals Unique Biochemical Signatures in Glioma. *Neuro-Oncology*. 2024.
- [6] Sagiv C et al. Artificial Intelligence in Surgical Pathology – Where Do We Stand? 2025.
- [7] Song AH et al. Artificial Intelligence for Digital and Computational Pathology. 2023.
- [8] Hu J et al. On Sight Pathology: A Real-Time Platform-Agnostic Computational Pathology Companion for Histopathology. 2025.
- [9] Terrones O et al. Raman Spectroscopy as a Tool to Study the Pathophysiology of Brain Diseases.
- [10] *International Journal of Molecular Sciences*. 2023.
- [11] Park Y. Holotomography in 2025: From Morphometric Imaging to AI-Driven Multimodal Phenotyping. 2026.
- [12] Zhu X et al. Recent Advances in Applications of Artificial Intelligence and Raman Spectroscopy in Cancer Diagnosis. 2025.

Author Profile

Karishma Pilankar is a high-school student at Podar International School, Ratnagiri, India, with having interests in AI-assisted

medicine, computational biology, and future diagnostic technologies. I aim to be a researcher which will have positive impact on entire humanity.