

Coexistence of Blue Dot and Sutural Cataract

Dr. Swati Kiran

Ophthalmologist, Zonal Hospital Dharamshala, Himachal Pradesh, India

Abstract: *A case report of appearance of blue dot and sutural cataract in the same eye. These kind of cataracts are usually associated with minimal disturbance in vision and appear as incidental finding on routine eye examination.*

Keywords: blue dot cataract, sutural cataract, congenital cataract

1. Case Report

A 50 years old man presented with diminished vision in both eyes. His BCVA came out to be both was 20/20 in both eyes after refraction. On slit lamp examination, his both eyes showed clear cornea and left eye showed breadcrumb like lenticular opacities which were bluish white in color distributed throughout the cortex of lens suggestive of blue dot cataract (Figure a). There were also opacification in the central part of lens in the shape of Y and inverted Y along the anterior and posterior sutural line of the lens matter respectively which is known as sutural cataract (Figure a). Our patient was prescribed glasses and advised for 3 monthly follow to look for any progression of cataract.

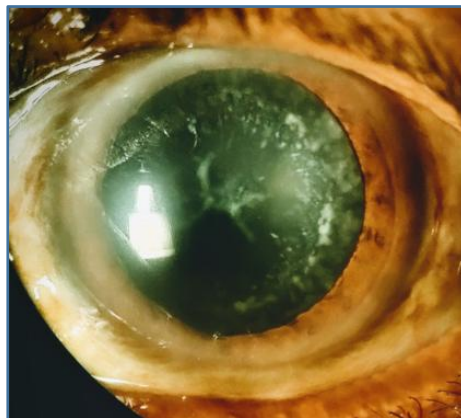


Figure a: Slit lamp picture of the left eye of patient

2. Discussion

Both these cataracts are congenital form of cataracts and usually do not cause any significant effect on the vision. The blue dot cataract also called as cerulean cataract was first described by Vogt. It is not a true congenital cataract and rather develops in the childhood and progresses through early life.

References

- [1] Vogt A (1922) Die spezifität anderer borenener und erworbenener starformen für die einzelnen linzenouene. Albrecht Von Graefes Arch Clin Exp Ophth **108**:219–228.
- [2] Kivlin J, Lovrien E, George C, Cannon L, Maumenee I(1985) Linkage between cerulean cataract and PGP. Cytogenet Cell Genet **40**:669