

# Bullous Pemphigoid: IGA Autoantibodies Target Epitopes on of Bullous Pemphigoid Antigen 180 Using Recombinant Ectodomains of Collagen XVII

Areida S.K.<sup>1</sup>, Brinckmann J.<sup>2</sup>

<sup>1</sup>Zoology Department, Faculty of Science, Mansoura University, Mansoura, Egypt

<sup>2</sup>Department of Dermatology, University of Lübeck, Lübeck, Germany  
Corresponding Author: areida2002@yahoo.com

**Abstract:** Type XVII collagen (BP180), promotes adhesion of basal keratinocytes to epidermal basement membrane, and is the target of disease in patients with certain inherited or acquired blistering diseases. Therefore, the aim of the present study was to investigate IgA autoantibodies using recombinant BP 180 proteins against bullous pemphigoid in the sera of patients. Thirty consecutive BP sera were analyzed by ELISA and western blotting using highly purified recombinant subdomain forms of the collagen XVII proteins. We have recombinantly produced of the collagen XVII ecto-subdomains in a mammalian expression system (BP180-A, B, C and D). The patients Sera with bullous pemphigoid mainly react with epitopes clustered within the NC16A and the NCI, C-terminal domains of BP180. Interestingly, out of 30 patients with BP, the sera of 25 reacted with recombinant BP 180 (A, B and C), and the sera of 22 reacted with BP 180-D. The bullous pemphigoid patient's sera reacted with the recombinant BP180 ectodomain (A, C and D). Therefore, a sensitivity of 86. % with BP180 (A and C) and 73% with BP180-D, resulted for the ELISA. Our results demonstrate that autoantibodies in BP target epitopes of subdomains of BP180 ectodomain.

**Keywords:** IgA autoantibodies, recombinant collagenXVII, bullous pemphigoid BP.

## 1. Introduction

Bullous pemphigoid (BP) is a chronic subepidermal blistering disease of the elderly characterized by tissue-bound and circulating autoantibodies to the dermal-epidermal junction (DEJ). An annual incidence ranging from 2.6 cases per million populations in the Arabian Gulf to 14 cases per million populations in north-east Scotland was detected (Korman, 1998; Gudi et al., 2005; Nanda et al., 2006). Clinically, BP is characterized by large, tense bullous lesions, but may begin as erythematous macules, urticarial papules or plaques (Lever et al., 1979).

The pathogenesis of BP is characterized by tissue-bound and circulating IgG auto-antibodies against two components of the hemidesmosome of stratified epithelia, referred to as BPAg1 and BPAg2 (Stanley et al., 1981; Labib et al., 1986). Two hemidesmosome-associated proteins, BP230 and BP180, have been identified as targets of autoantibodies in BP. BPAg1 is a cytoplasmic protein involved in the anchorage of intermediate filaments to the cytoskeleton and BPAg2 is a transmembrane adhesion molecule with several collagenous extracellular domains (Borradori et al., 1998). Antibodies to BPAg2 appear to be important in subepidermal blister formation in mice (Liu et al., 1993; Liu et al., 1995). BPAg1 may have a secondary role, but its exact functions in the pathogenesis is not fully defined (Hall et al., 1993; Ishiura et al., 2008).

IgG autoantibodies against BP180 correlate with disease activity in pemphigoid patients and induce eosinophil infiltration and dermal-epidermal separation when injected into human skin grafted on immunodeficient mice (Fairley et al., 2007; Zone et al., 2007). While the pathogenic potential of IgG and IgE autoantibodies against BP180 was

characterized *ex vivo* and in animal models, the pathogenicity of IgA autoantibodies was relatively less studied (Sitaru et al., 2005).

IgA autoantibodies from pemphigoid patient sera recognize several forms of BP180 and preferentially bind to proteolytic products of this autoantigen (Zone et al., 1990; Marinkovich et al., 1996). A positive correlation between clinical disease activity and antibodies to BPAg2 were detected by enzyme-linked immunosorbent assay (ELISA) (Schmidt et al., 2000). This correlation was similar to that observed between the auto-antibodies to desmogleins in patients with pemphigus vulgaris (Cheng et al., 2002). However, the positive correlation in BP was contrary to earlier observations using the standard indirect immunofluorescence (IIF) assay (Sams et al., 1971; Remy et al., 1975).

The aim of the present study was to detect IgA autoantibodies against collagen XVII in the sera of patients with Bullous pemphigoid using BP180 recombinant proteins.

## 2. Materials and Methods

### 2.1 Patients and Sera

Serum samples were obtained from patients with clinically active BP ( $n = 30$ ), i.e., patients with newly diagnosed BP who had not yet received immunosuppressive treatment. Patients and volunteers gave written consent to participate in this study, which was adherent to the Declaration of Helsinki Guidelines and has been approved by the local institutional review board.

Diagnosis of BP was based on the following criteria: 1) typical clinical presentation with tense cutaneous blisters; 2)

histopathological evidence of subepidermal blister formation; 3) linear IgG and/or C3 deposits at the dermoepidermal junction of perilesional skin by direct immunofluorescence; and 4) IgG reactivity with the epidermal side of human saline split skin or IgG reactivity with BP180 or BP230.

Severity of BP was classified according to the extent and number of blisters as either limited disease (only few bullae at limited areas of the body involving up to 20% of total body surface) or extensive disease with total body surface involvement greater than 20% and wide-spread bullae.

## 2.2 Production of recombinant BP180 ectodomain

The ecto-subdomains of BP180 were produced by stable expression in human embryonic kidney 293-EBNA cells (Invitrogen) as reported (Areida et al., 2001; Nishie et al., 2010). Briefly, the recombinant protein encoding for the subdomains of human BP180 ectodomain (BP180-A, B, C and D) were concentrated by ultrafiltration and purified by an anion exchange column and Superose 6 column. Fractions containing recombinant fragments of BP180 (A, B, C and D) were detected by SDS gel electrophoresis and Western blotting.

## 2.3 Electrophoresis and Western Blot Analysis

SDS gel electrophoresis (Laemmli, 1970) and Western blot analysis (Giudice et al., 1993) were performed according to standard procedures. 6 % polyacrylamide gels were used for rColXVII-A and -B, and 10 % polyacrylamide gels were used for rColXVII-C and -D. Polyclonal rabbit antiserum NC16a was used 1:1000 diluted for rColXVII-A, -B, and -C (Schumann et al., 2000) and polyclonal chicken antiserum Col17ecto-1 was used 1:20 diluted for rColXVII-D. The antisera were a generous gift of Dr. L. Bruckner-Tuderman. Goat-anti rabbit (1:1000; Dako) or goat antichick (1:100; Dako) antibodies conjugated to horseradish peroxidase were used as secondary antibodies, respectively.

## 2.4 ELISA

The ELISA using BP180 NC16A as the target antigen was performed as described previously (Schmidt et al., 2000). Briefly, wells were coated with purified forms of recombinant BP180-A, B, C and D respectively. Subsequently, wells were incubated with patient and control serum samples, and bound antibodies were visualized by peroxidase-conjugated rabbit antihuman IgG (DAKO).

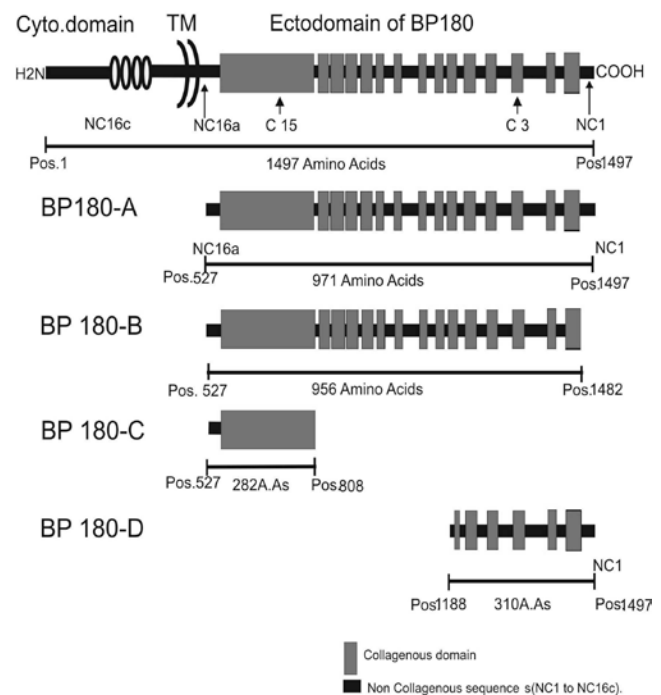
For detection of IgA autoantibodies, 40-well microtiter plates were coated with 1.4 µg/ well of recombinant BP180 ectodomains in 0.1 M bicarbonate buffer (pH 9.6), overnight at 4 °C. After washing with 0.05% Tween20-PBS (w/v) and subsequent 1 h blocking with 2% BSA-PBS (w/v) the plates were incubated for 1 h with 1:50 diluted sera in 1% BSA-0.05% Tween20-PBS (w/v). Bound antibodies were detected using a 1000-fold dilution of a horseradish-peroxidase (HRP) conjugated rabbit anti-human IgA antibody (ab8510, Abcam) and orthophenylene diamine (Dako). All steps were carried out at room temperature. The optical density (OD) was read at 490 nm using an automated spectrophotometer

(Sirius HT-TRF, MWG). Each serum was tested in duplicate. The cut-off for positivity was validated and optimized by receiver-operating characteristics (ROC) analysis as described below and was defined as 0.48 OD units at 490 nm.

## 3. Results

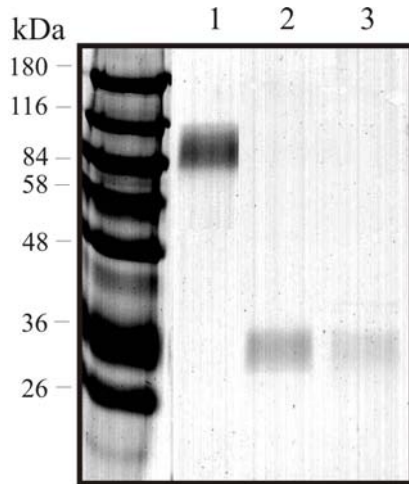
### 3.1 Production Recombinant BP180 Subdomains:

To investigate the reactivity of IgA autoantibodies from sera of bullous pemphigoid patients, we have produced several recombinant subdomains of the BP180 ectodomain in mammalian 293 cells. These subdomains included the full length ectodomain BP180-A (pos.527-1497), a C-terminal truncated form thereof BP180-B (pos. 527-1482), the largest collagenous BP180-C (pos. 527-808), and a short C-terminal subdomain BP180-D (pos. 1188-1497). These recombinant fragments are schematically summarized in [Fig-1]. After ion exchange chromatography followed by gel filtration chromatography, the highly purified recombinant subdomains with apparent molecular masses of 101 kDa (BP180-A), 96 kDa (BP180-B), 30 kDa (BP180-C), and 33 kDa (BP180-D) which corresponded well with the calculated values of collagenXVII [Fig-2], when separated by SDS-PAGE.



**Fig-1: Schematic representation of recombinant ectodomains of collagen XVII (BP 180) used in this study:** The extracellular domain consists of a series of 15 collagenous domains (C 1 through C 15, solid vertical boxes) and stretches of non collagenous domains (NC 1 through NC16a, horizontal bars). The BP180-A recombinant extends from amino acid 527 to 1497. BP180-B recombinant extends from amino acid 527 to 1482. BP180-C recombinant extends from amino acid 527 to 808. BP180-D recombinant

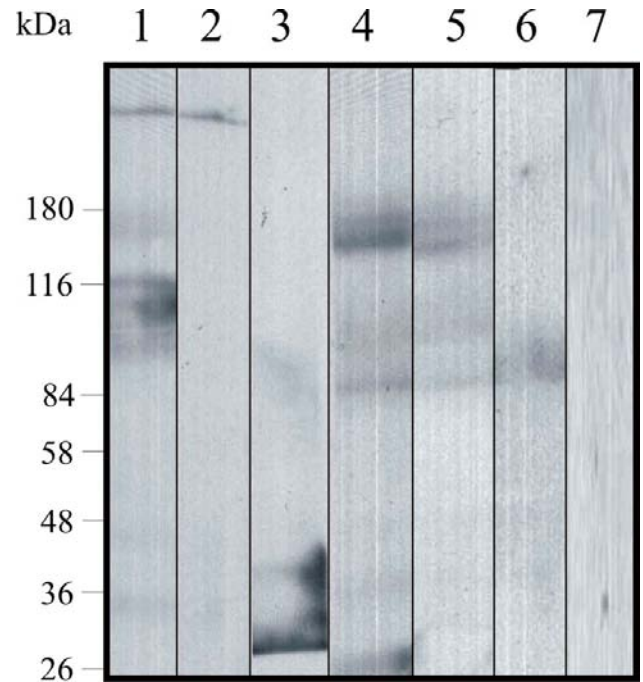
extends from amino acid positions 1188 to 1497. The total numbers of amino acid residues for each of the constructs are indicated. GH; globular head. TM; transmembrane region.



**Figure 2: Purification of recombinant BP180 proteins.** The purified recombinant BP180 proteins separated by Sodium dodecyl sulfate-polyacrylamide gel electrophoresis and stained with Coomassie Blue. The BP180-A, C and D migrates around 100 kDa (lane 1), 30 kDa (lane 2), and 33 kDa (lane 3) respectively.

### 3.2 Immunoblotting of recombinant BP180 subdomains with IgA bullous pemphigoid patients' sera

IgA autoantibodies from reference IgA bullous pemphigoid patients' sera (n = 30) recognized the recombinant BP180 ectodomain by immunoblotting [Fig-3]. Immunoblotting of BP serum samples was reacted with different recombinant fragments of BP180, NC16A (BP180-A, B and C) and recombinant fragments of BP180, NC1 with C-terminal (BP180-A and D) as shown in figure-3 [lane 1, 2 and 3] and [lane 4, 5 and 6] respectively. None of the normal human sera reacted with the autoantigens and IgA antibodies from none of the tested sera bound to the precipitated proteins of the empty vector transfected EBNA 293 cell culture medium [Fig-3, lane 7].



**Figure 3: Immunoblotting of recombinant BP180 subdomains with IgA bullous pemphigoid patients' sera:** Recombinant BP180-A (lanes 1, 4 and 5) recombinant BP180-B (lanes 2) recombinant BP180-C (lanes 3) recombinant BP180-D (lanes 6) and control using empty vector (lane 7).

### 3.3 ELISA analysis using BP180 recombinant proteins

The results of the ELISA were correlated with those of immunoblotting. Serum from BP patients showed IgA reactivity with the recombinant BP180 ecto-subdomain. Therefore, a sensitivity and a specificity of 86. % with BP180 (A and C) and 73% with BP180-D, respectively, were calculated for the ELISA detecting IgA autoantibodies against BP180 in patients with IgA pemphigoid [Table-1].

**Table 1:** ELISA analysis using BP180 recombinant proteins  
 Total number of tested sera = 30

	Indirect immunofluorescence	Direct immunofluorescence	Immunoblot with recombinant BP180-A-ectodomain	Immunoblot with recombinant BP180-C-ectodomain	Immunoblot with recombinant BP180-D-ectodomain
ELISA BP180 positive	25 (83%)	20 (66%)	24 (80%)	26 (86%)	22 (73%)
ELISA BP180 negative	5 (17%)	10 (34%)	6 (20%)	4 (14%)	8 (27%)



#### 4. Discussion

In the present study, we characterized the autoimmune response in 30 patients with the BP autoantibodies against recombinant BP180. IgG and IgE, IgA autoantibodies are present to different extent in pemphigoid diseases (Kromminga et al., 2000). While pemphigoid patients showing a predominant IgA autoimmune response directed against BP180 are diagnosed as linear IgA disease, IgA autoantibodies may complement a dominant IgG response in bullous pemphigoid or mucous membrane pemphigoid (Yancey et al., 1999; Schmidt et al., 2000; Mihai et al., 2007). However, quantitative assays for measuring the levels of serum IgA autoantibodies in pemphigoid diseases have not been established yet. Therefore, in the present study, we characterized ELISA and immunoreactivity using recombinant BP180 for the detection of IgA autoantibodies.

For detecting the IgA autoantibodies in pemphigoid diseases we have used a recently generated recombinant form of the ecto- subdomain of BP180 (Areida et al., 2001). The ecto-subdomain of the autoantigen was expressed in a human embryonic kidney 293 cell lines to ensure optimal posttranslational modifications of the protein, which were shown to influence the binding of pemphigoid autoantibodies of the IgG class (Zimina et al., 2008). The expression of the antigen in mammalian cells and the fact that our recombinant forms of BP180 contains its entire ectodomain significantly raised the sensitivity and specificity of the immunoassay and strongly support its use for the detection of IgA autoantibodies for the diagnosis of pemphigoid diseases.

The ELISA showed highly sensitive and specific for the detection of IgA autoantibodies in bullous pemphigoid. Since IgA reactivity with the epidermal side of the salt-split human skin by indirect IF microscopy was an inclusion criterion of the study patients. The observation that IgA autoantibodies against BP180 were detected in bullous pemphigoid patients is in line with previous findings (Schmidt et al., 2000, Kromminga et al., 2000). Our finding, that a significant proportion of the bullous pemphigoid patients show IgA autoantibodies against the ectodomain of BP180 suggests that the newly developed IgA ELISA may be a useful ancillary diagnostic tool in patients with bullous pemphigoid.

In addition to facilitating translational research focusing on the IgA autoimmune response in pemphigoid diseases, the ELISA could complement or replace the traditional semi-quantitative, observer-dependent and time-consuming IF microscopy on salt-split skin and immunoblotting using concentrated conditioned supernatant of cultured keratinocytes. In contrast to IgG reactivity (Di Zenzo et al., 2008), the ELISA levels of BP180-specific IgA correlated well with the IgA reactivity by indirect IF microscopy. In a recent study, we have investigated the potential of neoepitope-specific rabbit IgG antibodies to induce dermal-epidermal separation in an *ex vivo* assay (Nishie et al., 2010). Using developed ELISA with further recombinant forms of the BP180 ectodomain, which may better reproduce the neoepitopes of the native shed ectodomain, may facilitate addressing the diagnostic relevance of

measuring specifically the neoepitope-specific IgA autoantibodies.

We further generated a recombinant protein encompassing the extracellular domain of BP180 and found reactivity against this protein in a third of our CP sera. Previous studies demonstrated that the intracellular domain of BP180 mediates interaction between BP180 and the  $\beta 4$  subunit of  $\alpha 6\beta 4$  integrin, which is important for the stabilization of the DEJ (Liu et al., 1995). Interestingly, all of our sera reactive with the extracellular portion of BP180 recognized additional epitopes on the BP180 ectodomain. Initially, autoantibodies against extracellular epitopes may mediate blister formation as suggested by the experimental mouse model of BP where antibodies to the murine homologue of the human BP180 NC16A domain cause dermal-epidermal separation (Stanley et al., 1981). One may speculate, however, that during the later course of the disease, after some injury to the basal keratinocyte has occurred, extracellular epitopes may also become accessible for the immune response.

#### 5. Conclusion

We demonstrated that autoantibodies in patients with BP reacted with distinct epitopes clustered within the N-terminus of BP180 NC16A and C-terminus NC1. Our findings suggest that ELISA and immunoblotting using the NC16A and C-terminus NC1 domains as the target antigen are suitable tools for the diagnosis of BP and for monitoring disease activity during treatment.

#### 6. Acknowledgments

We gratefully acknowledge Dr. L. Bruckner-Tuderman, Münster, Germany, for providing us with antibodies to BP180. Also, we thank Drs George J. Giudice and Luis A. Diaz, Milwaukee, WI, U.S.A., for providing us with rabbit sera R136.

#### References

- [1] Areida SK, Reinhardt DP, Muller PK, Fietzek PP, Kowitz J, Marinkovich MP. (2001) Properties of the collagen type XVII ectodomain. Evidence for n- to c-terminal triple helix folding. *J Biol Chem* 276:1594-1601.
- [2] Borradori L, Chavanas S, Schaapveld RQ, Gagnoux-Palacios L, Calafat J, Meneguzzi G, (1998) Role of the bullous pemphigoid antigen 180 (BP180) in the assembly of hemidesmosomes and cell adhesion – reexpression of BP180 in generalized atrophic benign epidermolysis bullosa keratinocytes. *Exp Cell Res*; 239: 463–476.
- [3] Cheng SW, Kobayashi M, Kinoshita-Kuroda K, Tanikawa A, Amagai M, Nishikawa T. (2002) Monitoring disease activity in pemphigus with enzyme-linked immunosorbent assay using recombinant desmogleins 1 and 3. *Br J Dermatol*; 147: 261–265.
- [4] Di Zenzo G, Thoma-Uszynski S, Fontao L, Calabresi V, Hofmann SC, Hellmark T, Sebbag N, Pedicelli C,

- Sera F, Lacour J, Wieslander J, Bruckner-Tuderman L, Borradori L, Zambruno G, Hertl M. (2008) Multicenter prospective study of the humoral autoimmune response in bullous pemphigoid. *Clin Immunol.*;128:415–426.
- [5] Fairley JA, Burnett CT, Fu C, Larson DL, Fleming MG, Giudice GJ. (2007) A pathogenic role for IgE in autoimmunity: bullous pemphigoid IgE reproduces the early phase of lesion development in human skin grafted to nu/nu mice. *J Invest Dermatol.*;127:2605–2611.
- [6] Gudi VS, White MI, Cruickshank N, Herriot R, Edwards SL, Nimmo F, Cruickshank N. (2005) Annual incidence and mortality of bullous pemphigoid in the Grampian Region of North-east Scotland. *Br J Dermatol.*; 153: 424–427.
- [7] Giudice, G. J., Emery, D. J., Zelickson, B. D., Anhalt, G. J., Liu, Z., and Diaz, L. A. (1993) *J. Immunol.* **151**, 5742-5750.
- [8] Hall RP, Murray JC, McCord MM, Rico MJ, Streilein RD. (1993) Rabbits immunized with a peptide encoded for by the 230-kD bullous pemphigoid antigen cDNA develop an enhanced inflammatory response to UVB irradiation: a potential animal model for bullous pemphigoid. *J Invest Dermatol.*; 101: 9–14.
- [9] Ishiura N, Fujimoto M, Watanabe R, Nakashima H, Kuwano Y, Yazawa N. (2008) Serum levels of IgE anti-BP180 and anti-BP230 autoantibodies in patients with bullous pemphigoid. *J Dermatol Sci.*; 49: 153–161.
- [10] Korman NJ. (1998) Bullous pemphigoid. The latest in diagnosis, prognosis, and therapy. *Arch Dermatol.*; 134: 1137–1141.
- [11] Kromminga A, Scheckenbach C, Georgi M, Hagel C, Arndt R, Christophers E, Bröcker EB, Zillikens D. (2000) Patients with bullous pemphigoid and linear IgA disease show a dual IgA and IgG autoimmune response to BP180. *J Autoimmun.*;15:293–300.
- [12] Labib RS, Anhalt GJ, Patel HP, Mutasim DF, Diaz LA. (1986) Molecular heterogeneity of the bullous pemphigoid antigens as detected by immunoblotting. *J Immunol.*; 136: 1231–1235.
- [13] Laemmli, U. K. (1970) *Nature* **227**, 680-685
- [14] Lever WF. (1979) Pemphigus and pemphigoid. A review of the advances made since 1964. *J Am Acad Dermatol.*; 1: 2–31.
- [15] Liu Z, Diaz LA, Troy JL, Taylor AF, Emery DJ, Fairley JA. (1993) A passive transfer model of the organ-specific autoimmune disease, bullous pemphigoid, using antibodies generated against the hemidesmosomal antigen BP180. *J Clin Invest.*; 92: 2480–2488.
- [16] Liu Z, Giudice GJ, Swartz SJ, Fairley JA, Till GO, Troy JL. (1995) The role of complement in experimental bullous pemphigoid. *J Clin Invest.*; 95: 1539–1544.
- [17] Liu Z, Diaz LA, Swartz SJ (1995) Molecular mapping of a pathogenically relevant BP180 epitope associated with experimentally induced murine bullous pemphigoid. *J Immunol.*; 155: 5449–54.
- [18] Marinkovich MP, Taylor TB, Keene DR, Burgeson RE, Zone JJ. (1996) LAD-1, the linear IgA bullous dermatosis autoantigen, is a novel 120-kDa anchoring filament protein synthesized by epidermal cells. *J Invest Dermatol.*; 106:734 –738. doi: 10.1111/1523-1747.ep12345782.
- [19] Mihai S, Sitaru C. (2007) Immunopathology and molecular diagnosis of autoimmune bullous diseases. *J Cell Mol Med.*; 11:462–481.
- [20] Nanda A, Al-Saeid K, Al-Sabah H, Dvorak R, Alsaleh QA. (2006) Clinicoepidemiological features and course of 43 cases of bullous pemphigoid in Kuwait. *Clin Exp Dermatol.*; 31: 339–342.
- [21] Nishie W, Lamer S, Schlosser A, Licarete E, Franzke C, Hofmann S, Sitaru C, Bruckner-Tuderman L. (2010) Ectodomain shedding generates neopeptides on collagen XVII, the major autoantigen for bullous pemphigoid. *J Immunol.*;185:4938–4947.
- [22] Remy W, Bockendahl H, Stüttgen G. (1975) Immunofluorescent follow-up studies in patients with bullous dermatoses. *Acta Derm Venereol.*; 55: 117–120.
- [23] Sams WM Jr, Jordon RE. (1971) Correlation of pemphigoid and pemphigus antibody titres with activity of disease. *Br J Dermatol.*; 84: 7–13.
- [24] Schmidt E, Obe K, Bröcker EB, Zillikens D. (2000) Serum levels of autoantibodies to BP180 correlate with disease activity in patients with bullous pemphigoid. *Arch Dermatol.*; 136: 174–178.
- [25] Schumann, H., Baetge, J., Tasanen, K., Wojnarowska, F., Schacke, H., Zillikens, D., and Bruckner Tuderman, L. (2000) *Am. J. Pathol.* **156**, 685-695
- [26] Sitaru C, Zillikens D. (2005) Mechanisms of blister induction by autoantibodies. *Exp Dermatol.*; 14:861–875.
- [27] Stanley JR, Hawley-Nelson P, Yuspa SH, Shevach EM, Katz SI. (1981) Characterization of bullous pemphigoid antigen: a unique basement membrane protein of stratified squamous epithelia. *Cell.*; 24: 897–903.
- [28] Yancey KB. (1999) Cicatricial pemphigoid. In: *Dermatology in General Medicine* (FreedbergIM, EisenAZ, WolffK, AustenKF, GoldsmithLA, KatzSI et al., eds), 5th edn. New York: McGraw-Hill, Inc.: 674–9.
- [29] Zimina EP, Hofmann SC, Fritsch A, Kern JS, Sitaru C, Bruckner-Tuderman L. (2008) Bullous pemphigoid autoantibodies preferentially recognize phosphoepitopes in collagen XVII. *J Invest Dermatol.*;128:2736–2739.
- [30] Zone JJ, Taylor T, Hull C, Schmidt L, Meyer L. (2007) IgE basement membrane zone antibodies induce eosinophil infiltration and histological blisters in engrafted human skin on SCID mice. *J Invest Dermatol.*; 127:1167–1174.
- [31] Zone JJ, Taylor TB, Kadunce DP, Meyer LJ. (1990) Identification of the cutaneous basement membrane zone antigen and isolation of antibody in linear immunoglobulin A bullous dermatosis. *J Clin Invest.*; 85:812–820.